



**higher education
& training**

Department:
Higher Education and Training
REPUBLIC OF SOUTH AFRICA

MARKING GUIDELINE

NATIONAL CERTIFICATE

PATTERN CONSTRUCTION N5

21 NOVEMBER 2019

This marking guideline consists of 10 pages.

SECTION A**QUESTION 1**

- 1.1 C
- 1.2 H
- 1.3 I
- 1.4 A
- 1.5 B
- 1.6 J
- 1.7 E
- 1.8 G
- 1.9 F
- 1.10 D

(10 × 1) [10]

QUESTION 2

- 2.1
 - 2.1.1 Dart
 - 2.1.2 Knife pleat
 - 2.1.3 Gathers
 - 2.1.4 Squaring
 - 2.1.5 Two piece sleeve
 - 2.1.6 Parallel line
 - 2.1.7 Bisect/Bisector
 - 2.1.8 Pivotal point
 - 2.1.9 Sleeve length
 - 2.1.10 Shoulder width

(10 × 2) (20)

- 2.2
 - 2.2.1
 - Neck size
 - Chest
 - Waist
 - Scye depth
 - Back width
 - Shirt length

(Any 3 × 1) (3)

- 2.2.2
 - Seat
 - Waist
 - Body rise
 - Inside leg
 - Trouser bottom
 - Waistband

(Any 3 × 1) (3)

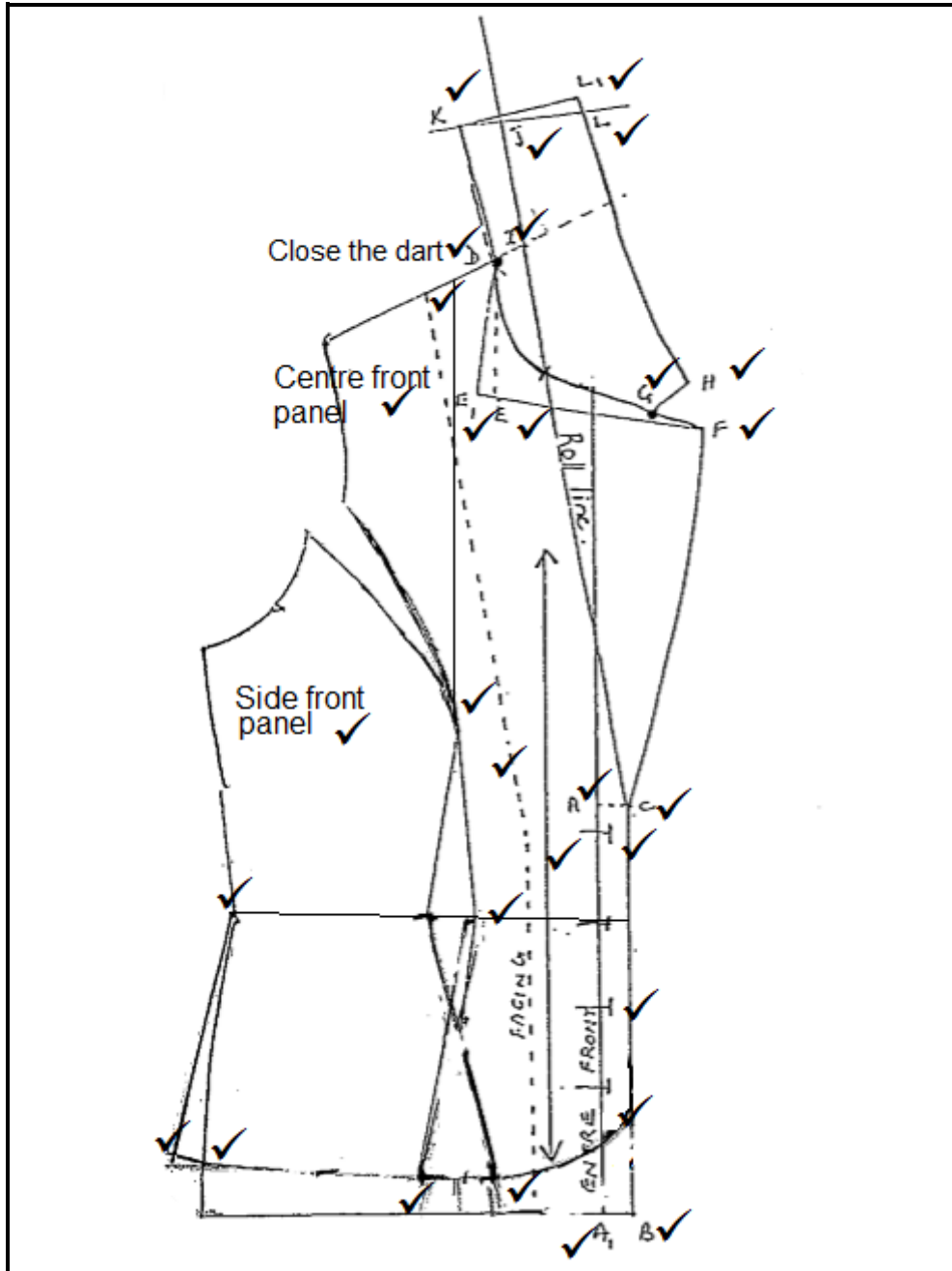
- 2.2.3
- Name of pattern part/piece
 - Size
 - Cutting instruction/information
 - Pattern name
 - Style number
 - Scale
 - Pattern number
- (Any 4 × 1) (4)
[30]

QUESTION 3

- 3.1 These are darts found at the shoulder of the bodice front bodice and the waist of the skirt block.
- 3.2 The shaping of the side seams and the darting, front and back, of a garment to make it fit the figure at the waistline.
- 3.3 Moving darts in accordance with a desired design to form style lines, pleats, gathers, tucks and outline silhouettes.
- 3.4 The slashing of block patterns is necessary to acquire fullness in the form of pleats, gathers and tucks etc., in a specific position on a garment.
- 3.5 Fullness built into a garment part by slashing the pattern piece to specific positions and then spreading the slashed sections at the hemline.
- (5 × 2) **[10]**
- TOTAL SECTION A: 50**

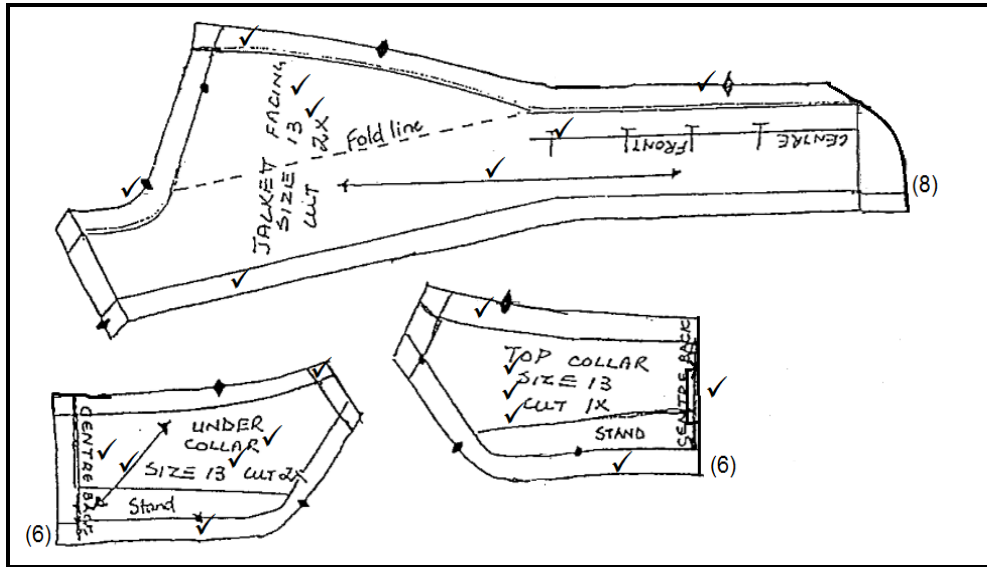
QUESTION 5

5.1 5.1.1



(30)

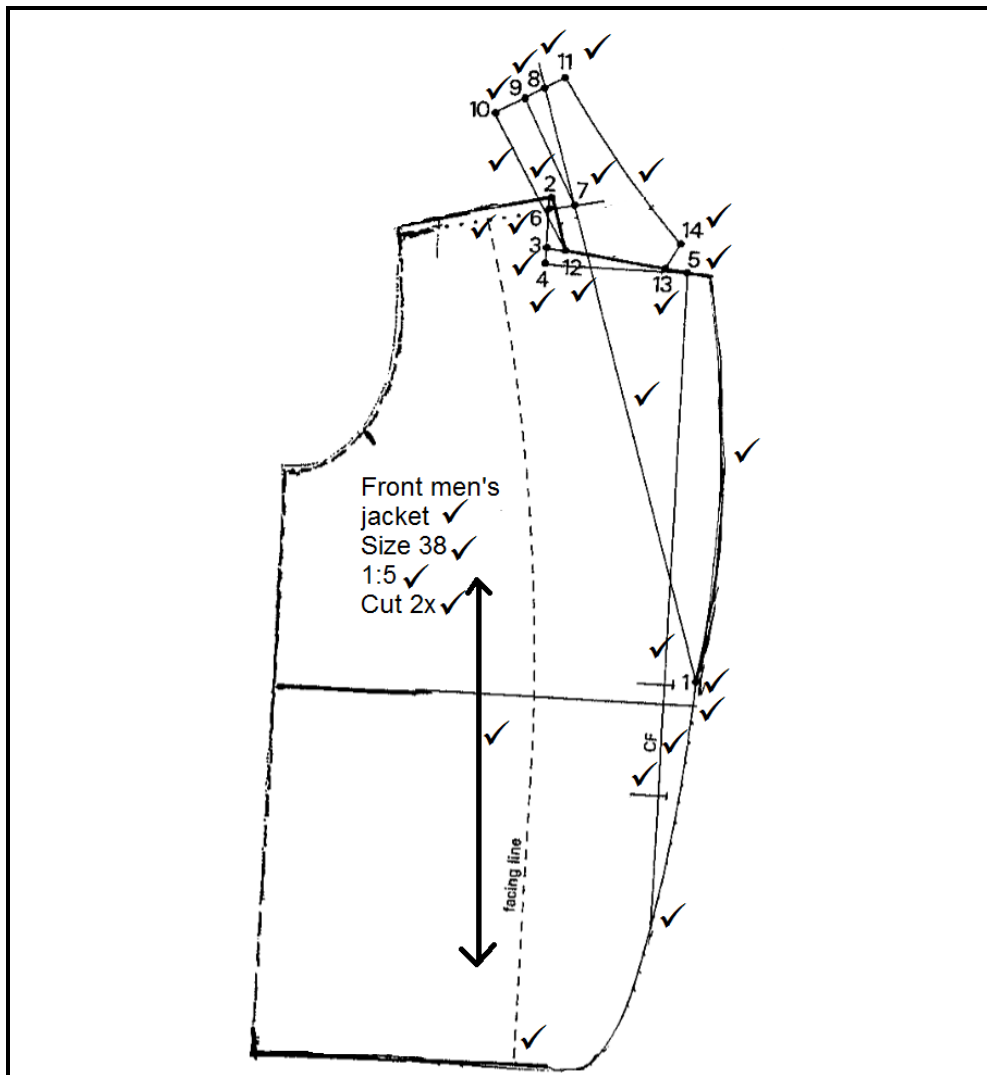
5.1.2



(20)
[50]

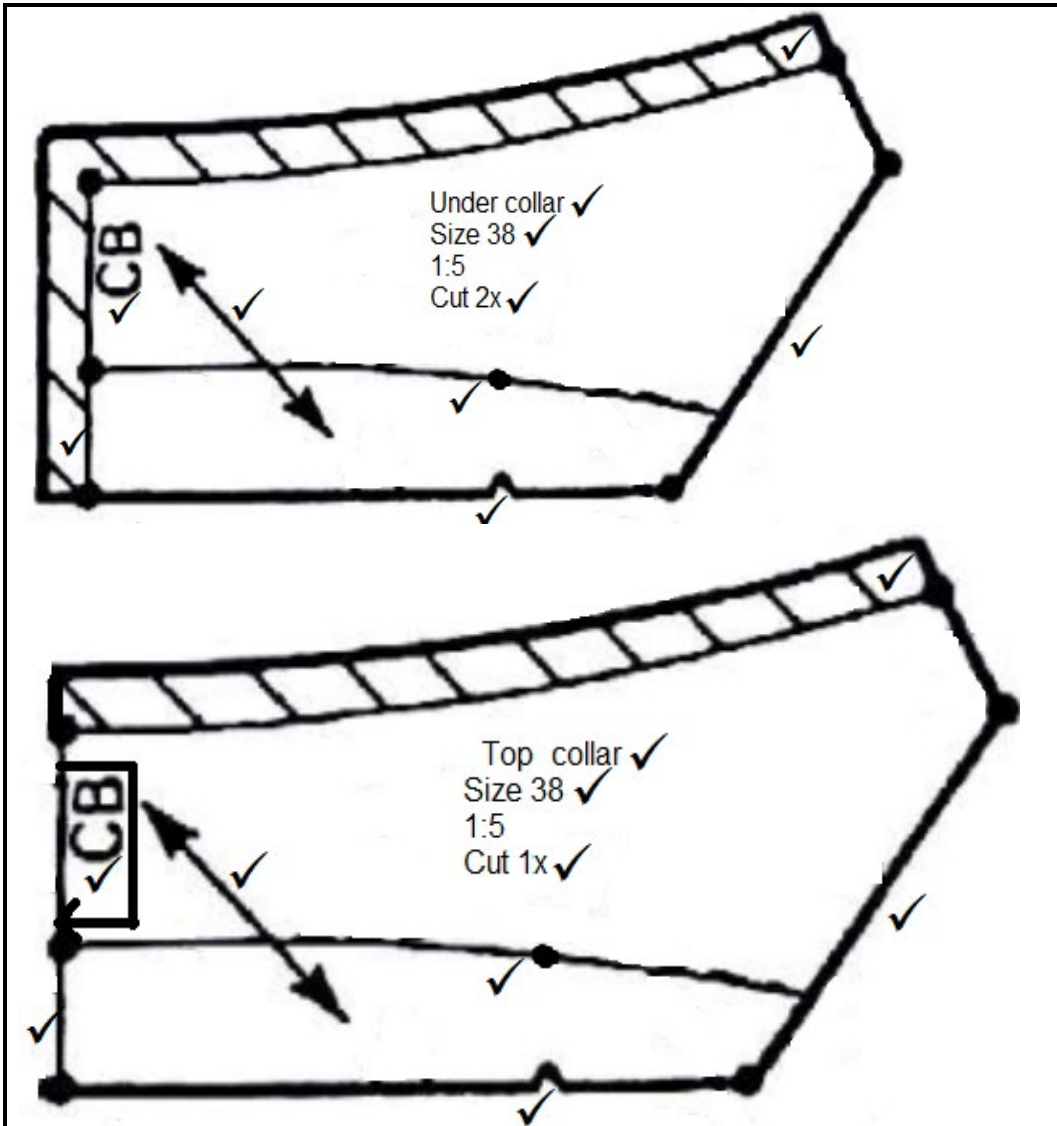
OR

5.2 5.2.1



(30)

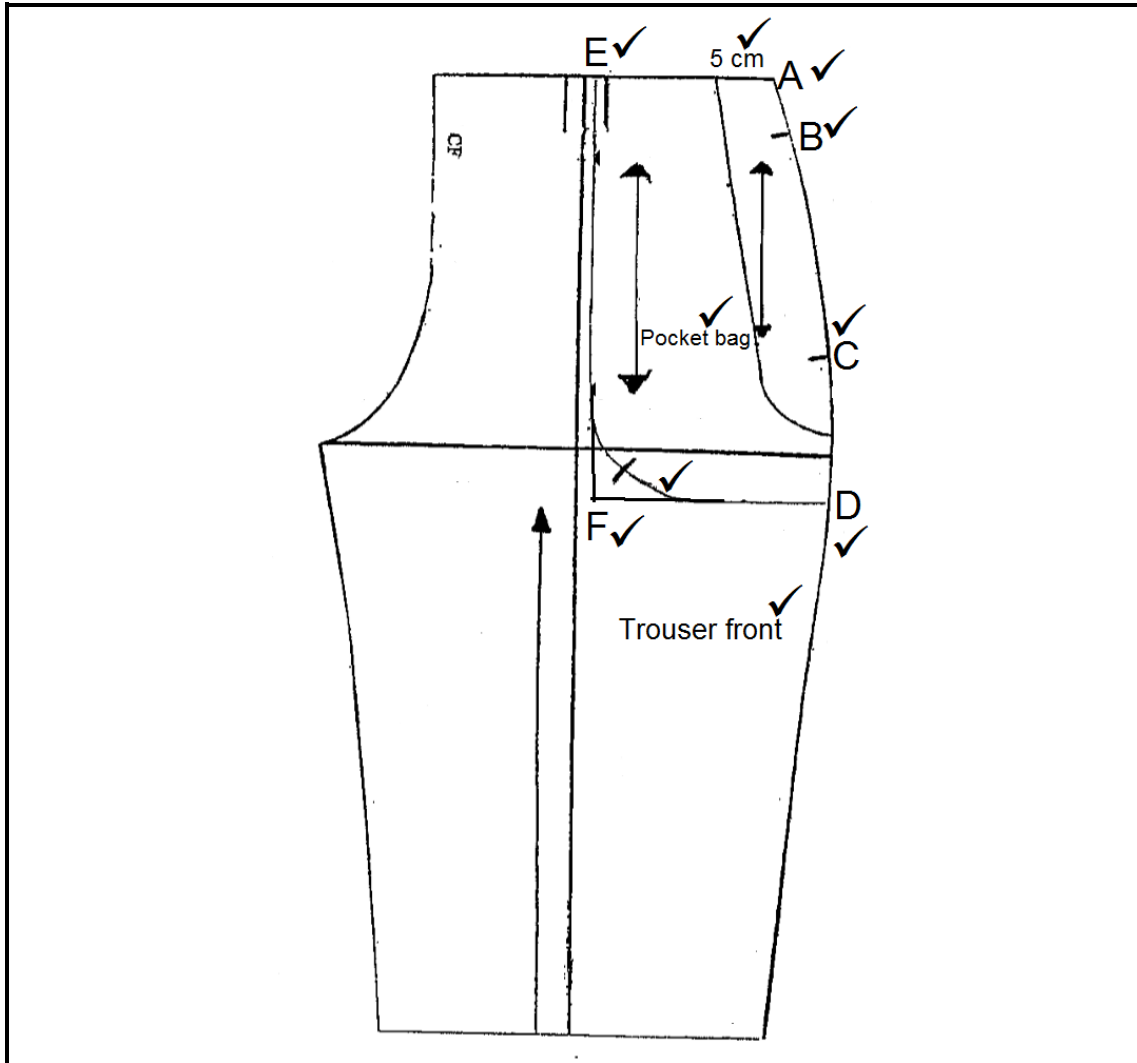
5.2.2



(20)
[50]

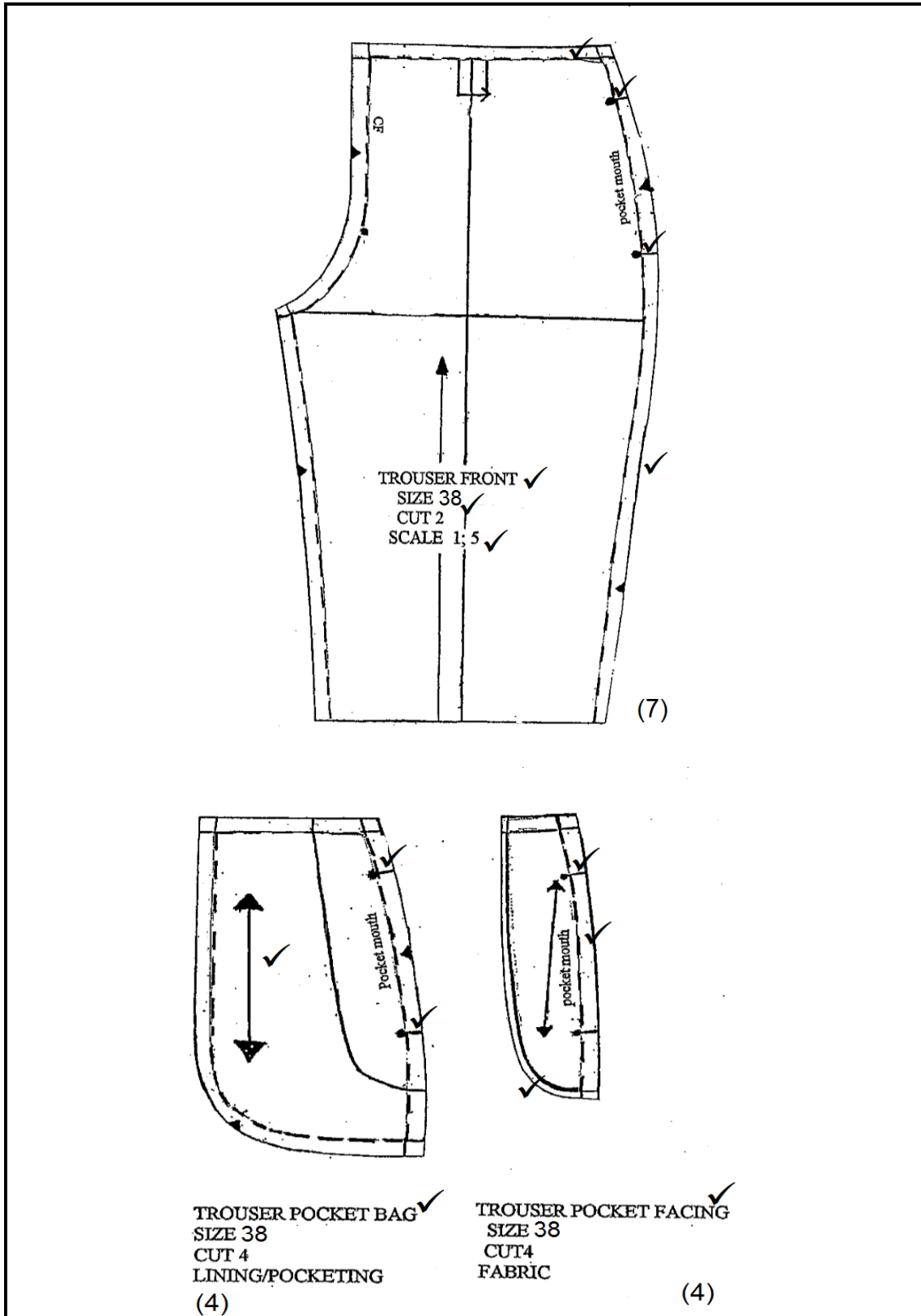
QUESTION 6

6.1



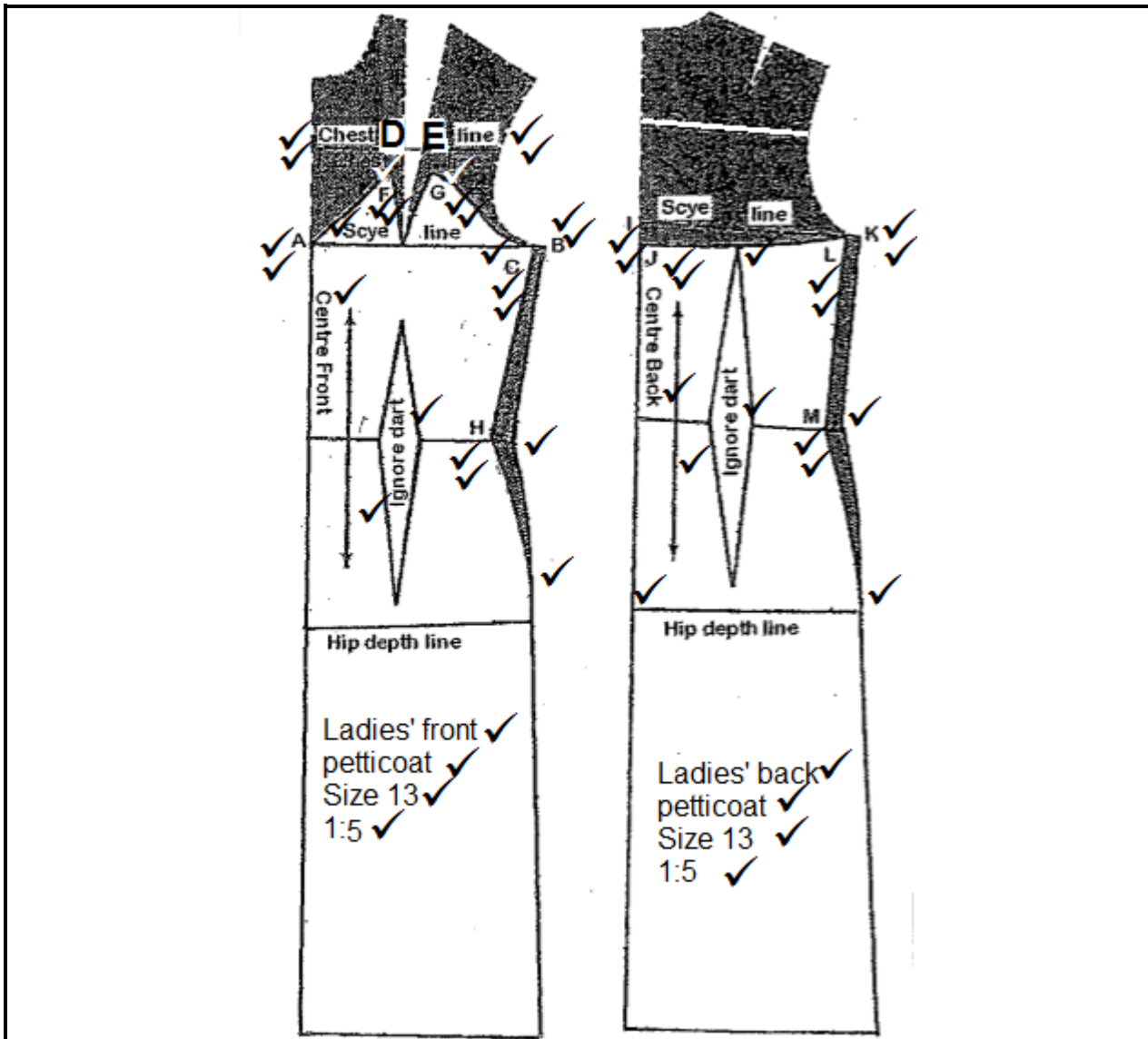
(10)

6.2



(15)
[25]

QUESTION 7



[50]

TOTAL SECTION B: 150
GRAND TOTAL: 200