



**higher education
& training**

Department:
Higher Education and Training
REPUBLIC OF SOUTH AFRICA

MARKING GUIDELINE

**NATIONAL CERTIFICATE
PATTERN CONSTRUCTION N5**

20 NOVEMBER 2018

This marking guideline consists of 10 pages.

SECTION A**QUESTION 1**

- 1.1 False
- 1.2 False
- 1.3 True
- 1.4 False
- 1.5 False
- 1.6 True
- 1.7 True
- 1.8 True
- 1.9 True
- 1.10 True

(10 × 1) [10]

QUESTION 2

- 2.1
 - 2.1.1 Tailored collar
 - 2.1.2 Shirt collar
 - 2.1.3 Roll/Shawl collar
 - 2.1.4 Mandarin collar
 - 2.1.5 Sailor collar

(5 × 2) (10)

- 2.2
 - 2.2.1 Marked on the basic bodice blocks at the arm scye so that necessary measurements can be taken to draft the basic sleeve
 - 2.2.2 Seam allowance that is covered with a facing
 - 2.2.3 Refers to the shaping at the side seams and the darting, front and back, of a garment to make it fit the figure at the waistline
 - 2.2.4 Darts that are found at the shoulder of the basic front bodice and the waist of the basic skirt block. Their function is to give the appropriate amount of ease over the bust and over the female figure.
 - 2.2.5 Taking measurements around the body

(5 × 3) (15)

- 2.3
 - Kimono sleeve
 - Batwing sleeve
 - Raglan sleeve

(3)

- 2.4 • Seat
- Inside leg
- Body rise
- Waist

(Any 2 × 1) (2)
[30]

QUESTION 3

- 3.1 C
- 3.2 C
- 3.3 B
- 3.4 B
- 3.5 D
- 3.6 A
- 3.7 A
- 3.8 B
- 3.9 D
- 3.10 D

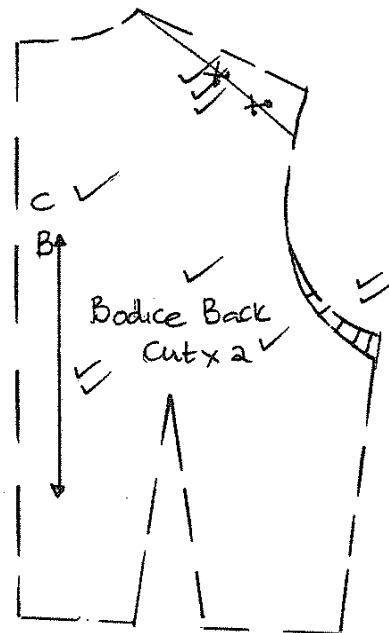
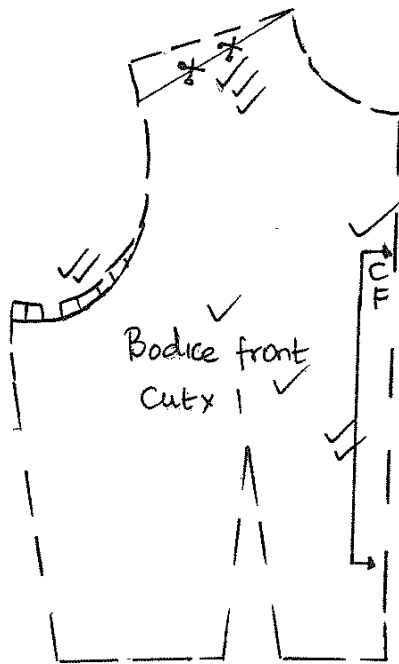
(10 × 1) **[10]**

TOTAL SECTION A: 50

SECTION B

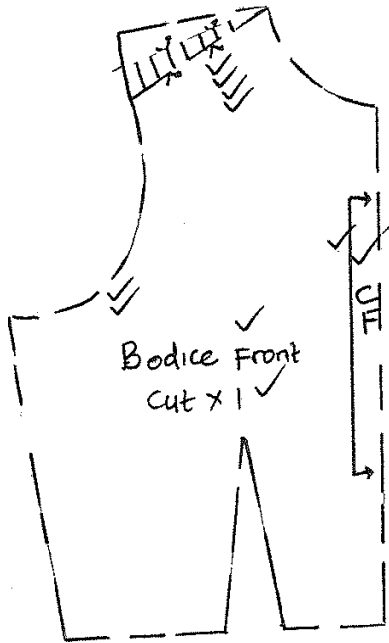
QUESTION 4

4.1



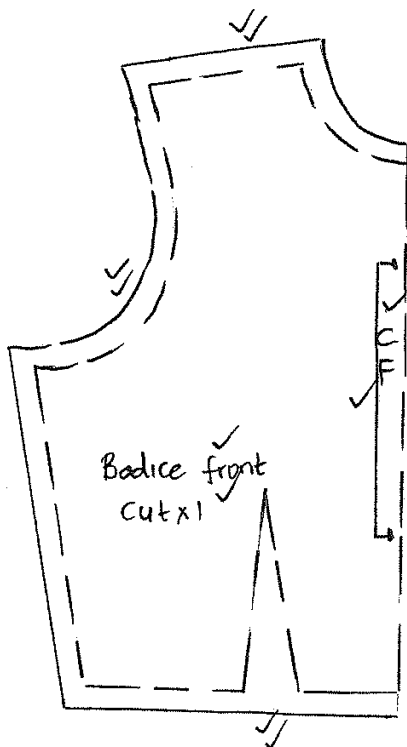
(20)

4.2



(10)

4.3



(10)

4.4

4.4.1

- Make sure the grainline is correct on the pattern piece.
- Slash the line and paste the one half of the pattern onto a strip of backing paper.
- Measure the required additional measurement onto the backing paper and draw a line.
- Attach the second half of the pattern onto this line.
- Make sure that the grain line is perfectly straight.
- Reconstruct or connect the shoulder seam, waistline and hemline.

(Any relevant answer) (Any 5 × 1) (5)

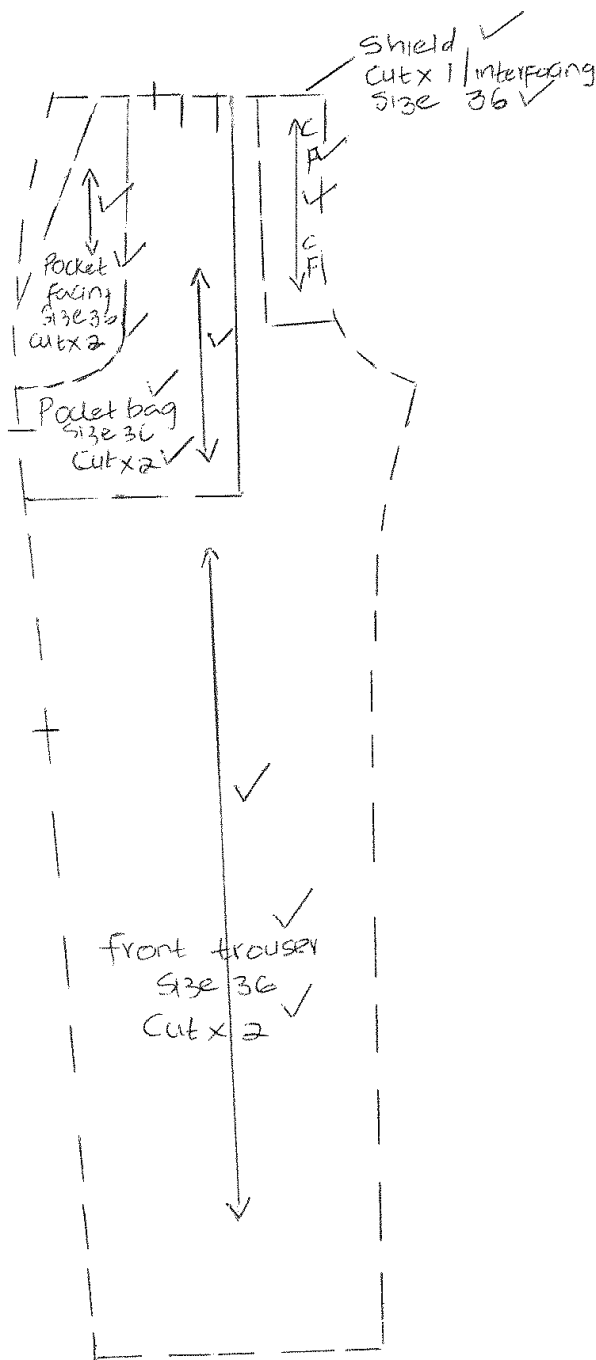
PATTERN CONSTRUCTION N5

- 4.4.2
- Make sure the grainline is correct on the pattern piece.
 - Fold the pattern on the indication line.
 - Measure the required amount inwards from the indication line (fold).
 - Turn the fold down and pin it in place.
 - Make sure that the grainline is perfectly straight.
 - Reconstruct or connect the shoulder seam, waistline, hemline, sleeve head and wrist line. (Any relevant answer) (Any 5 × 1)

(5)
[50]

QUESTION 5

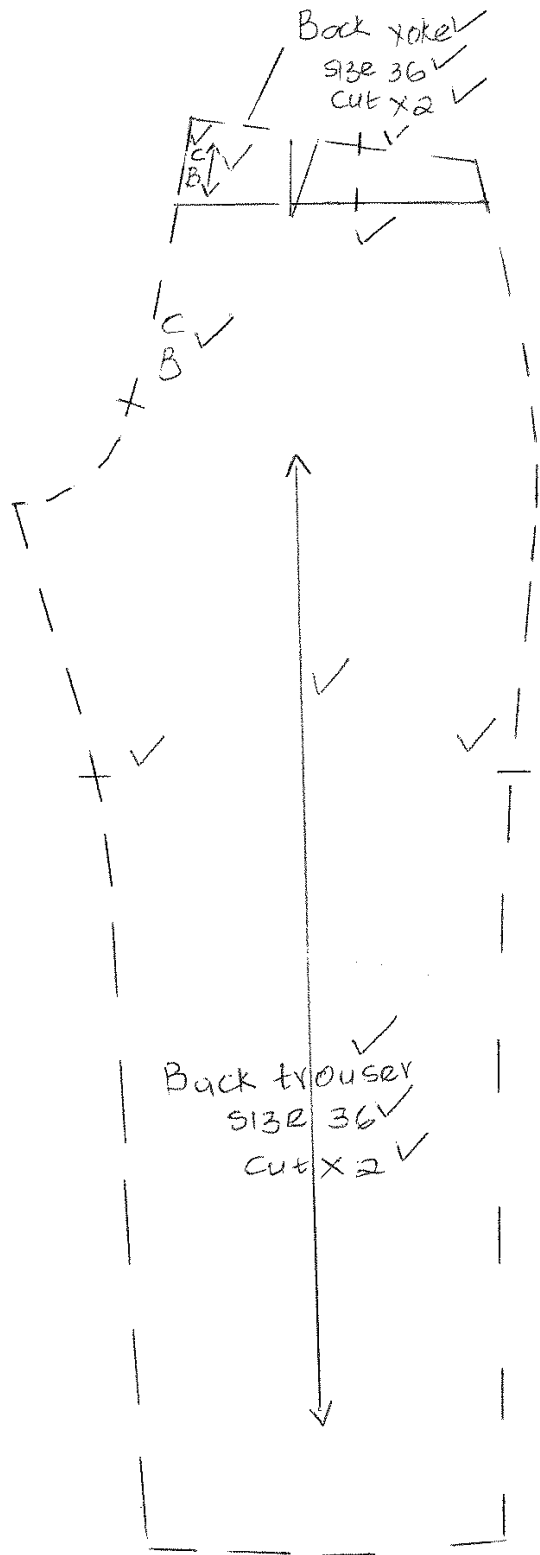
5.1



(23)

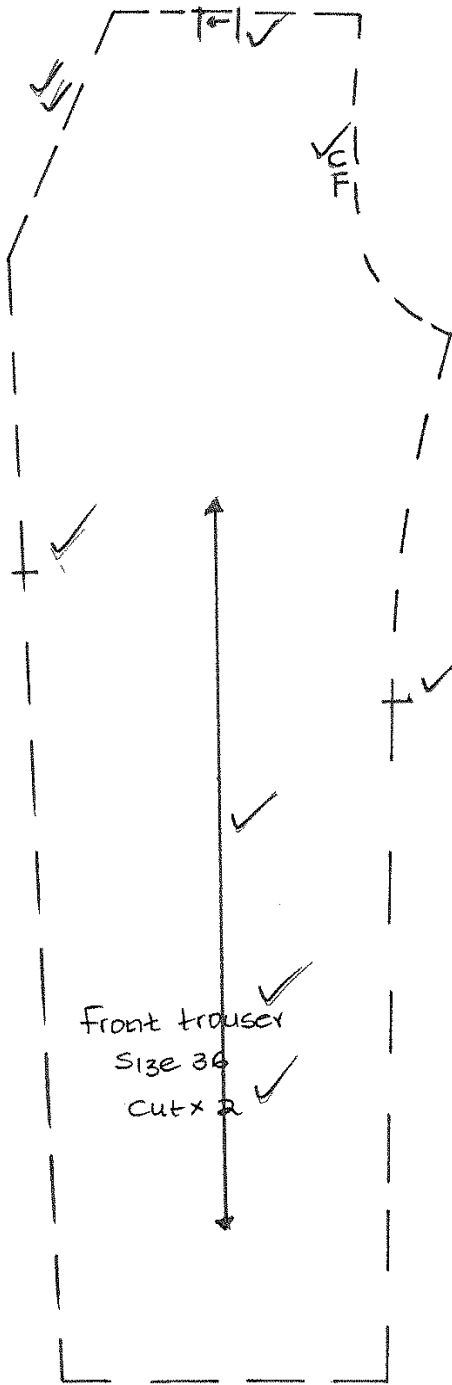
PATTERN CONSTRUCTION N5

5.2



(18)

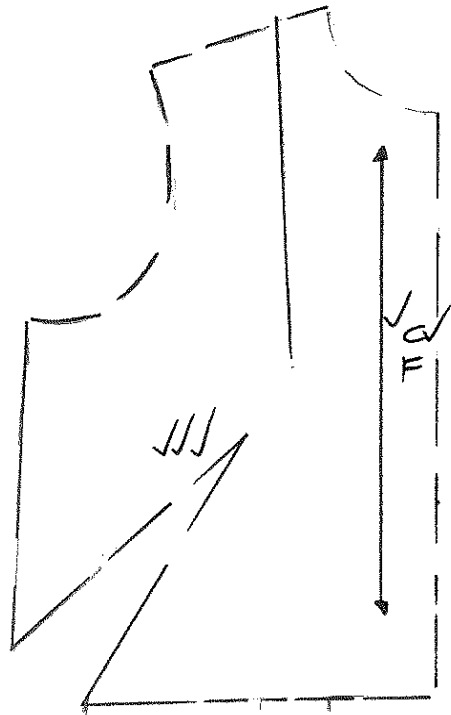
5.3



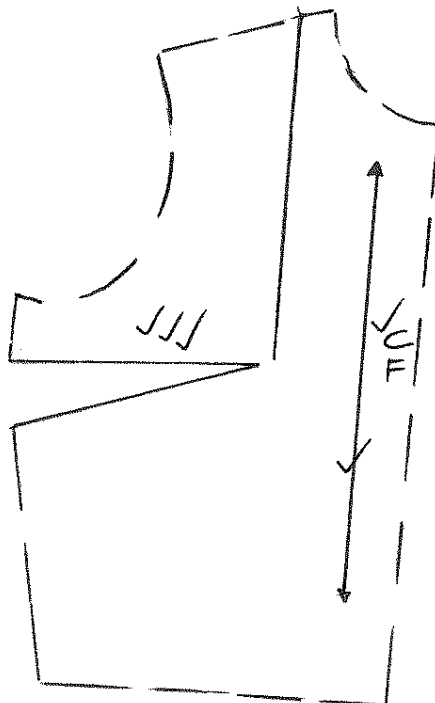
(9)
[50]

QUESTION 6

6.1 6.1.1

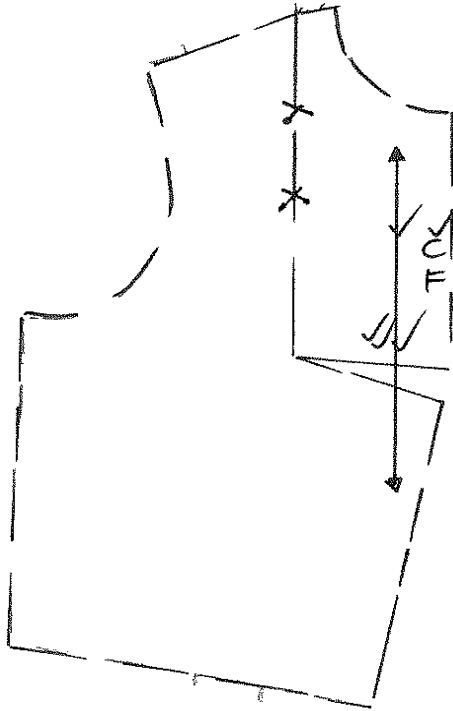


6.1.2

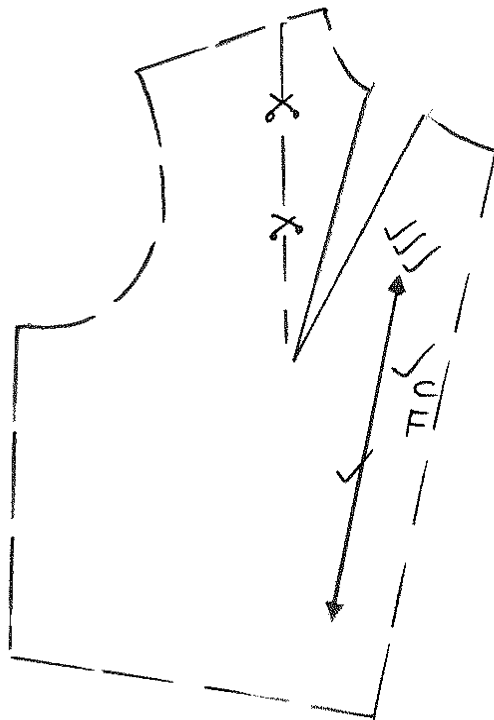


PATTERN CONSTRUCTION N5

6.1.3

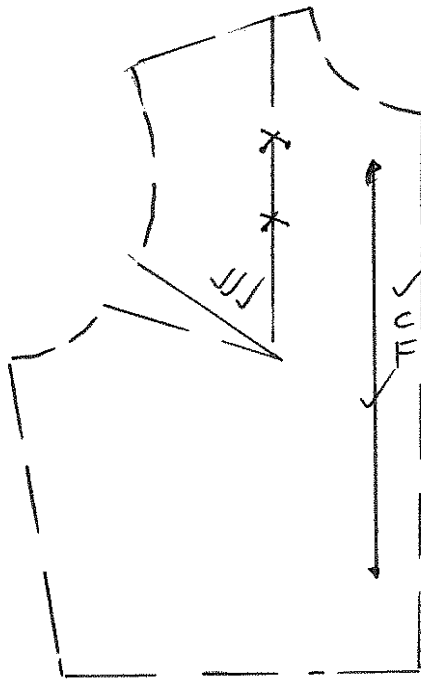


6.1.4



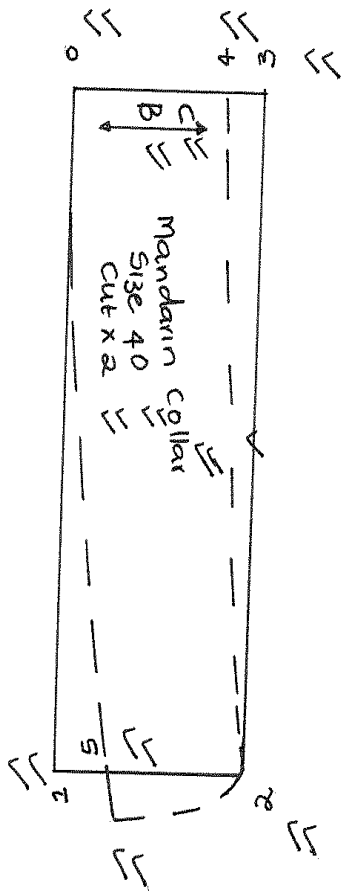
PATTERN CONSTRUCTION N5

6.1.5



(5 × 5) (25)

6.2



(25)
[50]

TOTAL SECTION B: 150
GRAND TOTAL: 200