



# higher education & training

Department:  
Higher Education and Training  
**REPUBLIC OF SOUTH AFRICA**

## **NATIONAL CERTIFICATE PATTERN CONSTRUCTION N5**

(10010515)

**1 June 2021 (X-paper)  
09:00–12:00**

**REQUIREMENTS:** White typing paper.

**Calculators and drawing instruments may be used.**

**This question paper consists of 13 pages and 4 addenda.**

165Q1J2101

**DEPARTMENT OF HIGHER EDUCATION AND TRAINING**  
**REPUBLIC OF SOUTH AFRICA**  
NATIONAL CERTIFICATE  
PATTERN CONSTRUCTION N5  
TIME: 3 HOURS  
MARKS: 200

---


**INSTRUCTIONS AND INFORMATION**

1. Answer all the questions.
  2. Read all the questions carefully.
  3. Number the answers according to the numbering system used in this question paper.
  4. Start each question on a new page.
  5. Write neatly and legibly.
-

**SECTION A****QUESTION 1**

1.1 Various options are given as possible answers to the following questions. Choose the answer and write only the letter (A–D) next to the question number (1.1.1–1.1.10) in the ANSWER BOOK.


1.1.1 This must be maintained to save time and money when measuring the figure, applying dimensions, checking fabric quantities and styling straight or curved lines.

- A Scale 
- B Size
- C Accuracy
- D Squaring

1.1.2 Straight vertical and lateral lines that form the basis for the location of system points in the production of basic block patterns.

- A Landmarks
- B Construction lines
- C Pattern lines
- D Pitches


1.1.3 Outlines for the different block sections of the figure.

- A Construction lines 
- B Templates
- C Scale
- D Pattern lines


1.1.4 Used in basic pattern construction for drafts as a working set of proportions of the bust, chest and hip.

- A Scale
- B Size
- C Squaring
- D Prominence

1.1.5 The buttonholes on a men's formal shirt are placed ... on the centre front line.

- A horizontally
- B vertically 
- C diagonally
- D as desired

1.1.6 Back and front pitches are marked on the ... of the basic bodice block.

- A shoulder
- B neckline 
- C armhole
- D waistline

1.1.7 The sleeve that forms part of the neckline is called a ... sleeve.

- A Dolman
- B Magyar
- C Kimono
- D Raglan


1.1.8 Area on the bodice where the armhole is situated.

- A Sleeve 
- B Scye
- C Scale
- D Pitches

1.1.9 The space between the legs to take up fullness and release fabric where it is needed.




- A Dart intake
- B Dart point
- C Dart legs
- D Bust point

1.1.10 Disposal of fullness found at the shoulder of the basic front ladies' bodice block and the waist of the basic skirt block.

- A Pitches 
- B Bust prominence
- C Control dart
- D Waistline

(10 × 1) (10)

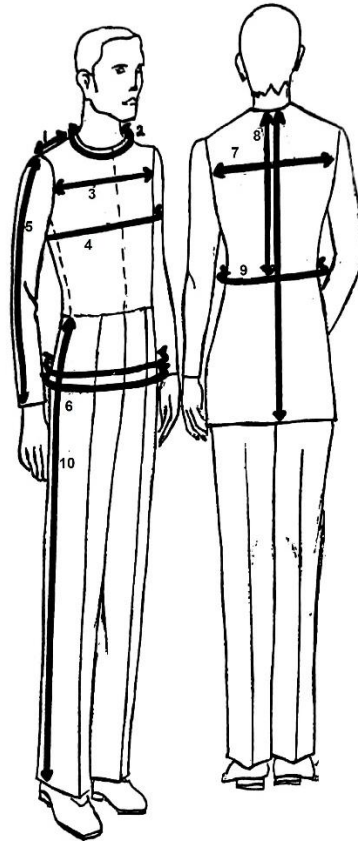
- 1.2 Choose an item from COLUMN B that matches a description in COLUMN A. Write only the letter (A–L) next to the question number (1.2.1–1.2.10) in the ANSWER BOOK.

COLUMN A		COLUMN B	
1.2.1	To crease, fold one dart leg to dart point, then fold it over to meet the other leg 	A	pattern manipulation
1.2.2	They are shown at the end of the slash line	B	waist suppression
1.2.3	The shaping at the side seams, and the darting, front and back, of a garment to make it fit the figure	C	sleeve
1.2.4	Marked balance points on basic bodice blocks at the scye	D	wedge
1.2.5	The tapered inset let into a pattern piece to create a flare	E	pivot
1.2.6	Act of slashing and spreading or pivoting the pattern sections to alter its original shape	F	spots 
1.2.7	Fullness built into the garment part by slashing the pattern piece at specific positions	G	rise height
1.2.8	The swinging of an arc from a certain fixed point 	H	flare
1.2.9	Even distribution of fullness without forming gathers	I	cupping the pattern
1.2.10	The difference between the outside and inside leg pants	J	ease
		K	pitches
		L	neckline

(10 × 1)

(10)

1.3 Briefly identify and explain how to take the following measurements on a man's figure using the sketch below. Write your answer (1–10) next to the question number (1.3) in the ANSWER BOOK.





(10 × 3)

(30)  
[50]

**TOTAL SECTION A:**

**50**

**SECTION B****INSTRUCTIONS AND INFORMATION**

1. All the drafts must be done on the specified scale.
  2. Drafts must be done on white TYPING PAPER. Use a black fine liner pen to make clear construction lines. Do not cut out the drafts. Paste the draft(s) into the ANSWER BOOK. 
  3. It is not necessary to trace any of the blocks for planning and manipulation. Enough basic blocks are provided for the planning and manipulation. Use the white TYPING PAPER for manipulations.
  4. Manipulations must be pasted directly into the ANSWER BOOK. Then add seam and hem allowances, if required.
  5. No loose parts will be marked. 
  6. Number the answers according to the numbering system used in this question paper.
  7. Do not use red or green pens.
- 

**QUESTION 2**

Draft the two-piece sleeve block for ladies' jackets and coats, on fifth scale. Use the following measurements and instructions.

**MEASUREMENTS**




Back arm sleeve length	55 cm
Front arm sleeve length	45 cm
Back pitch to back shoulder plus front shoulder to front pitch	22 cm
Back pitch around under scye to front pitch	17 cm
Back pitch to scye depth X	10,5 cm
Total armhole circumference	54 cm



## INSTRUCTIONS

Mark point 0,30 cm down from the top edge and 40 cm inside the right edge of a sheet of paper.

Square down and across to the left from point 0.

- 0-1 = The measurement from back pitch to scye depth X minus 2,5 cm (8 cm)  
8 cm measured downwards from 0 and mark point 1
- 1-2 = The measurement from back pitch to back shoulder plus front shoulder to front pitch, minus 2 cm (20 cm)  
20 cm measured to the left from 1 to touch the squared line from point 0.  
Join 1 to 2. 
- 2-3 = One third of the measurement from 1 to 2 plus 2 cm measured to the right on the line from point 0 (8,7 cm)  
8,7 cm measured to the right from 2
- 3-4 = 3 cm squared upwards
- 5 = Midway between 0 and 3
- 1-1A = 1,5 cm measured upwards from point 1  
Curve top sleeve head from point 1a to 5 to 4 and round to point 2
- 2-6 = The hind arm sleeve length measured downwards to the right to touch the line from point 1 (55 cm)  
Join 2 to 6 with a dotted line 
- 6-7 = 2,5 cm squared to the right  
Join points 1 to 7
- 7-8 = 2 cm squared downwards
- 8-9 = One quarter of the total armhole circumference plus 2,5 cm (13,75 cm)  
13,75 cm squared to the left and mark point 9
- 1-10 = Midway between 1 and 7  
Square to the left from point 10
- 10-11 = 3 cm measured to the left  
Join 2 to 9 and mark point 12 where the 2-9 line crosses the squared line from point 10
- 12-13 = 3 cm measured to the left on the line from point 10
- 13-14 = 2 cm measured to the right on the line from point 10
- 2-15 = 2 cm squared to the left
- 15-15A = 2 cm squared downwards  
Square to the right from point 15a with a dotted line
- 1-16 = The measurement from back pitch to front pitch, measured around under scye minus 2 cm (15 cm)  
15 cm measured to the left from point 1 to touch the dotted line from point 15a  
Curve from point 9 to 14 to 16   
This is the hind arm line of the under sleeve
- 1-17 = 7,2 cm squared to the left
- 1-18 = 2 cm squared to the right
- 1-19 = 2 cm squared to the left
- 11-20 = 2 cm squared to the right



- 11-21 = 2 cm squared to the left
- 7-22 = 2 cm squared to the right
- 7-23 = 2 cm squared to the left



Curve from point 23 to 21 to 19  
 Curve from point 22 to 20 to 18  
 This is the forearm sleeve line

Extend curve from point 2 to 15a

Curve from point 9 to 13 to 5  
 This is the hind arm sleeve line

Join 9 to 23 for under sleeve cuff edge  
 Join 9 to 22 for top sleeve cuff edge

Gradually curve down 1,5 cm from point 19, then up to 17 and on to 16 to finish the under sleeve

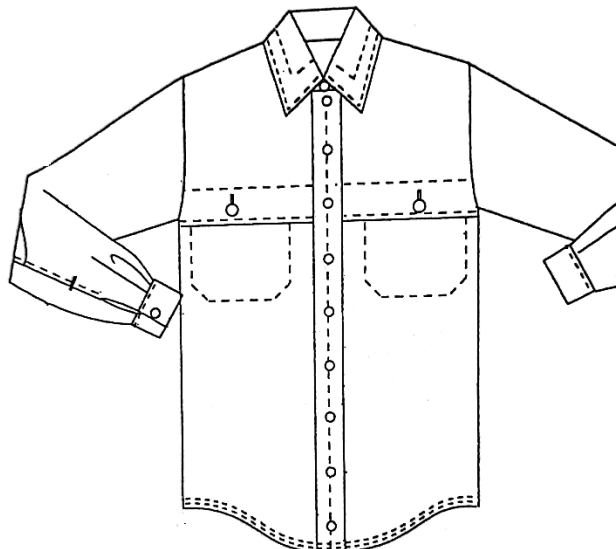
Label the sleeve block



[50]

### QUESTION 3

Study the sketch of a men's shirt with single strap front, size 38 and answer the following questions using the shirt block on ADDENDUM A.



- 3.1 Submit the planning for the front (15)
- 3.2 Submit the final for the front button strap (10)

**MEASUREMENTS**

Button strap width	3 cm
Buttonholes	1,5 cm
Seam allowance	1 cm
Button stand	1,5 cm
Button space	10 cm

**INSTRUCTIONS**

Mark centre front 

Add the button stand at the centre front (1,5 cm)

Draw the strap line in from the centre front (1,5 cm)

Mark the buttonhole

Draw the yoke 12 cm from centre front neck line

Square across to the armhole

Indicate the slash line

Trace off the strap pattern

Mark the centre front line for the strap

Add the seam allowance at the edge of the strap

Label the pattern

Add the grain line 

**[25]****QUESTION 4**

Answer only ONE question. Choose between QUESTION 4.1 and 4.2.

4.1 Adapt the ladies' basic straight coat block back and front, size 13 on fifth scale. Use the ladies' one piece dress block and sleeve block on ADDENDUM B.

4.1.1 Submit the front coat (10)

4.1.2 Submit the back coat (10)

4.1.3 Submit the sleeve (5)

**INSTRUCTIONS & MEASUREMENTS****Back and Front**

Lower the armholes 5 cm 

Increase in width at armhole under scye position 3 cm and at side seam hemline, 4 cm.

Recurve the armhole

Draw new side seam lines

Increase at centre front hemline 2 cm. Join to centre front neck point

Ignore the darts

Label the block

**Sleeve**

Increase in width at under scye and cuff edges 3 cm, and lower armhole 5 cm.

Recurve the sleeve head.

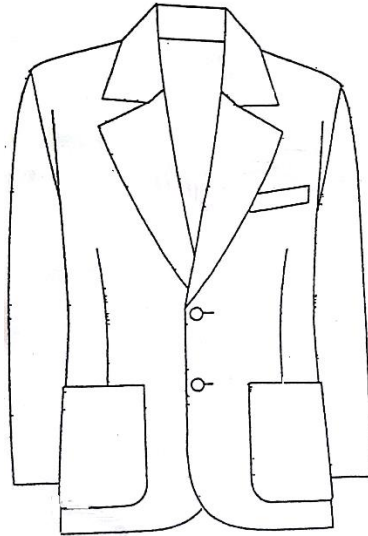
Draw new sleeve seam lines

Label the block



OR

- 4.2 Study the sketch below for the men's basic jacket with reverse collar and draft the collar using the men's jacket front block in ADDENDUM C, on fifth scale.



#### INSTRUCTIONS & MEASUREMENTS

Draw the facing line (5 cm)

Mark point 1 at break point (18 cm)



Mark point 2 at the shoulder point. Square down from 2  
2-3 = 6 cm

3-4 = 1,5 cm. Square across on the centre front line

Join 3 to 5. Extend the reverse line from 5

Mark in and extend the fitting line of the shoulder

Mark 6 at the neck point.

6-7 = 2,5 cm

Draw the break line from 1 through to 7, extended line

7-8 = 9 cm of the back neck

8-9 = 2 cm. Join 7 to 9

Using line 7-9, square across both ways from 9

9-10 = 3 cm

9-11 = 4 cm



Draw the line from 10 parallel to the line 7-9 to touch the front shoulder line

Draw the curve from neckline and draw the style line of the collar and reverse

Mark the gents' collar from 13-14

Mark the buttonhole

Label the pattern

[25]

**QUESTION 5**

Study the sketch of the skirt below. Use the skirt block back and front on ADDENDUM D. On fifth scale, adapt the front and back of the long panelled flare skirt with train using the following measurements and instructions.



Submit the planning of the front and back panelled skirt.

**MEASUREMENTS**

Skirt length at the centre back 130 cm  
 Skirt length at the centre front 90 cm

**INSTRUCTIONS**

Start at the top of the page.

Mark onto the typing paper front and back skirt block and place so that the centre front and centre back lines are parallel, and the side seam hemline points meet.

- A = At the centre back waistline
  - A–B = 60 cm from A. Square down to centre back
  - C = At the side seam of the back and front where they meet
  - D = Square across from B to D at the centre front
  - E = At the centre front waist line
  - A–E = B–D
  - B–F = 30 cm to floor length
  - D–G = 30 cm to the floor length
  - F–H = 40 cm at the centre back for the train length
  - G–I =  $\frac{2}{3}$  of the front floor length skirt hemline width  
Ignore the waist dart
  - A–J =  $\frac{1}{3}$  of the back waist dimension to the right
  - J–K =  $\frac{1}{3}$  of the back waist dimension to the right
  - E–L =  $\frac{1}{5}$  of the waist dimension plus dart measurement to the left
  - L–M = Twice the measurement of E to L to the left
  - M–N = L–M to the left
  - O = Midpoint of G to I
- 
- Draw front skirt panels front L to O and I to M  
 Draw train curve from O around to H curve of the hemline

- C–P = Extend C down to P of the hemline of the side seam  
Draw skirt side seam from back and front skirt hipline down to P
- I–Q = Extension of the side panel line from I to Q on the front curve of the hemline



Divide the back skirt floor length hemline width into three equal parts.

Mark R and S on these panel points.

Draw the back panel lines J to R down to T at the hemline and from K to S down to U at the hemline.

Divide the normal back dart allowance into two and form two narrow darts, one at J and one at K – the length of these darts to correspond with the back dart.

The front waist dart is incorporated into the side front panel.

Mark in the slash lines and spots on each side and indicate the broken lines by 7,5 cm from the waist line



Broken line = 2 mm from the slash line

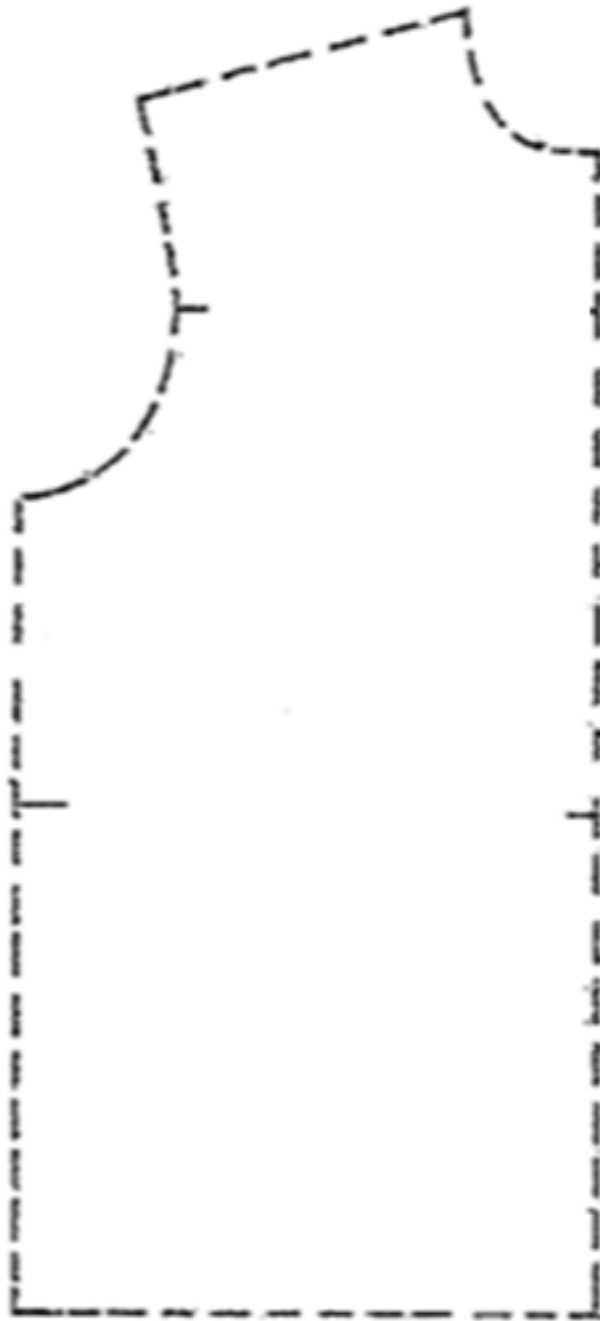
Mark the panel lines from 1 to 6

Label each panel

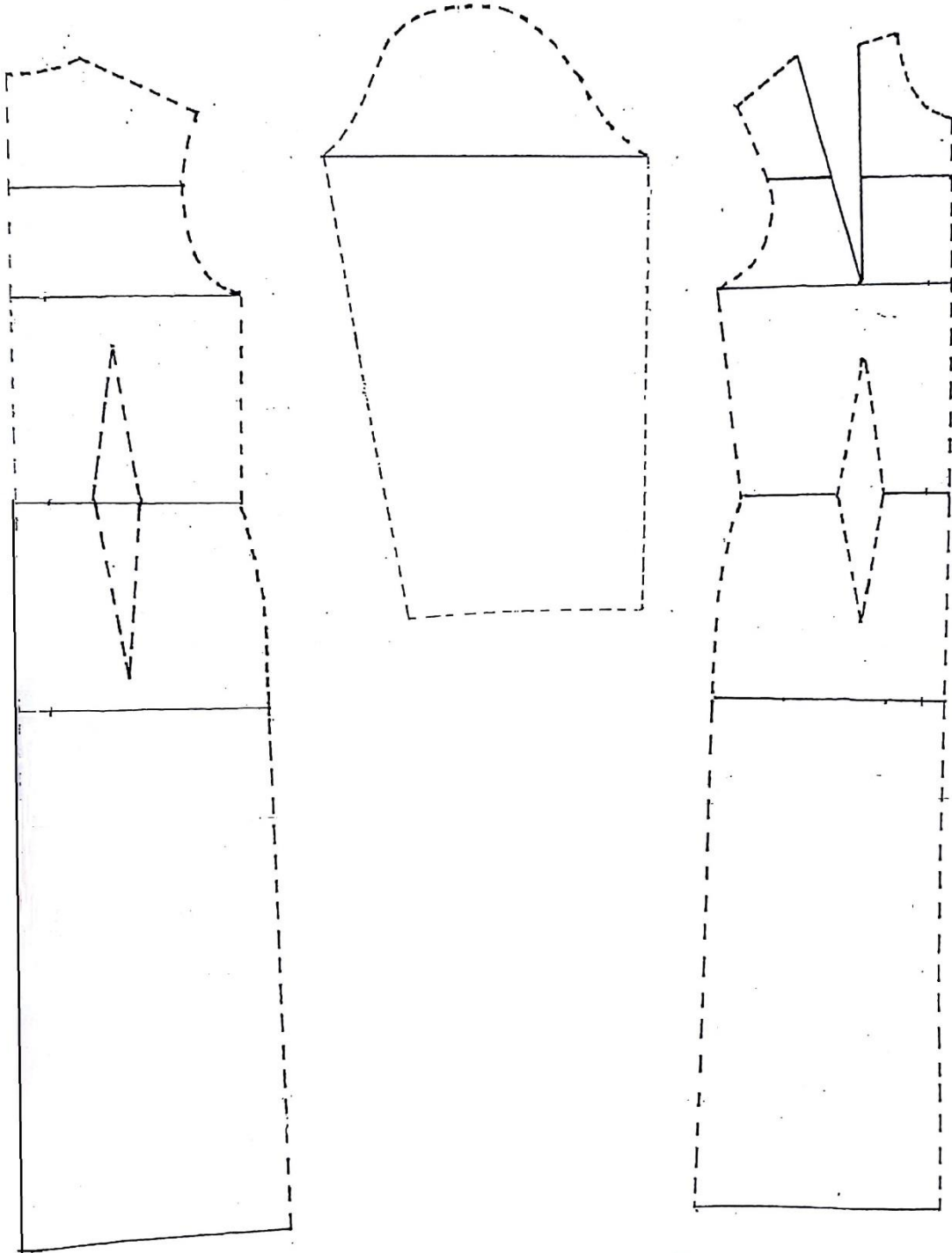
**[50]**

**TOTAL SECTION B: 150**  
**GRAND TOTAL: 200**

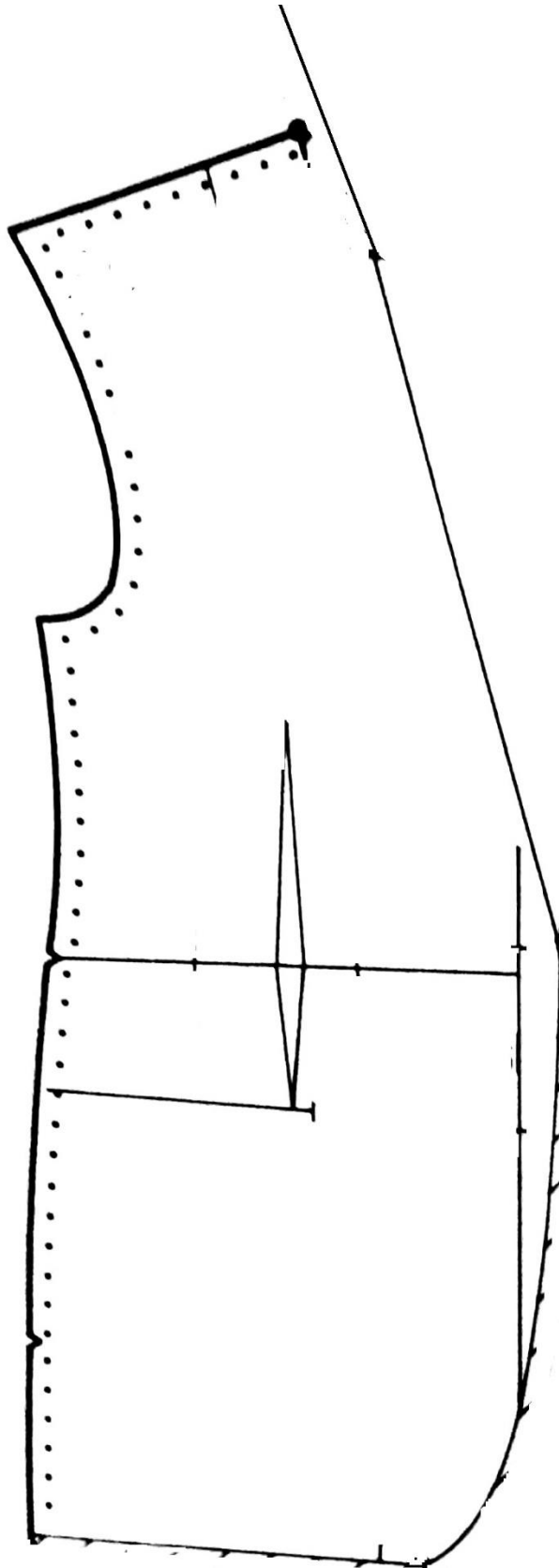
**ADDENDUM A**



**ADDENDUM B**



**ADDENDUM C**





**ADDENDUM D**

