



higher education & training

Department:
Higher Education and Training
REPUBLIC OF SOUTH AFRICA

N1290(E)(J3)H

NATIONAL CERTIFICATE PATTERN CONSTRUCTION N5

(10010515)

**3 June 2019 (X-Paper)
09:00–12:00**

REQUIREMENTS: White typing paper

Candidates need drawing instruments and a black fineliner pen.

Calculators may be used.


This question paper consists of 13 pages and 4 addenda.

DEPARTMENT OF HIGHER EDUCATION AND TRAINING
REPUBLIC OF SOUTH AFRICA
NATIONAL CERTIFICATE
PATTERN CONSTRUCTION N5
TIME: 3 HOURS
MARKS: 200

INSTRUCTIONS AND INFORMATION

1. Answer ALL the questions.
 2. Read ALL the questions carefully.
 3. Number the answers according to the numbering system used in this question paper.
 4. In SECTION B, QUESTION 4, answer only ONE question, either 4.1 or 4.2.
 5. Write neatly and legibly.
-

SECTION A**QUESTION 1**

1.1 Various options are given as possible answers to the following statements. Choose the answer and write only the letter (A–D) next to the question number (1.1.1–1.1.10) in the ANSWER BOOK. 

1.1.1 A sleeve not forming part of the neckline is called a ... sleeve.

- A Dolman
- B Magyar
- C Kimono
- D Raglan

1.1.2 An American yoke is usually used on

- A men's clothes
- B sleeves
- C a culotte
- D slacks

1.1.3 The technique of using body measurements when drafting a pattern is called the ... drafting system.


- A metric
- B direct measuring
- C proportionate
- D pattern

1.1.4 The changing of the basic block to fit various figure disproportions:



- A Drafting
- B Basic block
- C Pattern adaptation
- D Working pattern

1.1.5 Straight vertical and lateral lines that form the basis for the location system points for height:

- A Markers
- B Construction lines 
- C Trade block
- D Seam allowance

1.1.6 The outline for the different block sections such as front bodice and back bodice:



- A Pattern lines
- B Front facing
- C Collar
- D Scye line

1.1.7 The assembly position for seams and darts in the construction of a garment:

- A Princess line
- B Cost sheet
- C Dart
- D Fitting line

1.1.8 The production from a single master pattern: A set or range of sizes of the same pattern:

- A Final pattern
- B Pattern grading
- C Styled pattern
- D Markers



1.1.9 The first pattern developed for a design:


- A Front centre
- B Bust point
- C Primary pattern
- D Pattern manipulation

1.1.10 After the marker is made and laid on top the layers of fabric, the garments are cut by





- A a pattern cutter
- B a bust point
- C a marker
- D grading

(10 × 1) (10)

- 1.2 Briefly explain how to take the following measurements on a man's figure:
- 1.2.1 Chest 
 - 1.2.2 Body rise
 - 1.2.3 Upper arm
 - 1.2.4 Shoulder to wrist
 - 1.2.5 Shoulder width
- (5 × 2) (10)
[20]

QUESTION 2


- 2.1 Briefly explain each of the following terms that are used in pattern construction. Write only the answer next to the question number (2.1.1–2.1.6) in the ANSWER BOOK.

-  2.1.1 Direct measure system
 - 2.1.2 Bust prominence
 - 2.1.3 Final pattern
 - 2.1.4 Working pattern
 - 2.1.5 Proportionate measure system
 - 2.1.6 Pattern drafting
- (6 × 3) (18)
- 2.2
- 2.2.1 Name THREE positions of the bust and shoulder darts when doing dart manipulation. (3)
 - 2.2.2 Name THREE pocket pieces needed when constructing jet pockets. (3)
 - 2.2.3 List THREE measurements needed when drafting a ladies' skirt.  (3)
 - 2.2.4 Give THREE types of pleats. (3)
- [30]**

TOTAL SECTION A: 50

SECTION B

QUESTION 3

Study the sketch below and manipulate the front trouser with pleats at the waistline in FIFTH scale. Use the men's trouser block on ADDENDUM A (attached). 



MEASUREMENTS

Pleat depth 3 cm each

3.1 Submit the planning of the front.  (15)

3.2 Submit the working pattern of the front. (15)
[30]

SECTION B**QUESTION 4** 

Answer only ONE question. Choose between QUESTION 4.1 and 4.2.

INSTRUCTIONSFont planning 

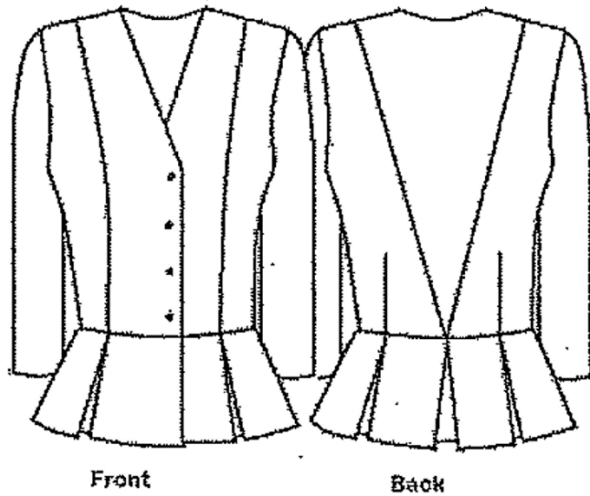
- Use the front trouser block.
- Draw a line midway between the knee line and the hem line.
- Draw the slash line across, on the crease line.
- Indicate the slash line.
- Extend the waistline by 2,5 cm to C at the side seam.
- Join C to the knee line.
- Label and add the grain line.

Front working pattern 

- Cut across the slash line.
- Divide the top section on the crease line.
- Open, cut and spread 3 cm pleat for the first pleat.
- Leave a space of approximately 4 cm between the pleats.
- Mark the second pleat 3 cm.
- Label the pattern and add the grain line.
- Indicate the pleats.


4.1 Ladies' jacket with peplum

Study the sketch and manipulate the ladies' jacket with peplum in FIFTH scale. Use ladies' jacket block back and front on ADDENDUM B (attached). 



4.1.1 Submit the planning for the front. (15)

4.1.2 Submit the planning for the back. (15)

 4.1.3 Submit the final for the front. (20)
[50]

MEASUREMENTS:

Pleat depth	8 cm
Facing	5 cm
Seam allowance	1,5 cm
Hem allowance	3 cm
Button stand	2 cm
Button diameter	2 cm




INSTRUCTIONS 

Back planning

- Draw the waistline.
- Measure half of the shoulder seam and draw the panel line to the centre back waistline.
- Mark back facing.
- Indicate the slash line/peplum.
- Add 8 cm pleat at the back centre.
- At the bottom dart point, square up and down from the waistline to the hipline.
- Indicate the slash lines for the pleat.
- Indicate the slash line from the hemline on the dart seam to the waistline.
- Label and add the grain line.

Front planning

- Lower the neckline by 10 cm.
- Draw the new neckline.
- Draw the waistline.
- Mark half of the shoulder and mark the slash line from the shoulder to the dart point.
- Indicate the princess line from the shoulder seam to the waistline.
- Mark the facing.
- Add the button stand then mark the buttonhole position.
- Indicate the peplum.
- At the bottom of the dart point, square up and down from the waistline to the hipline.
- Indicate the slash line on the dart seam from the hemline to the waistline.
- Label and add the grain line. 

Final front 

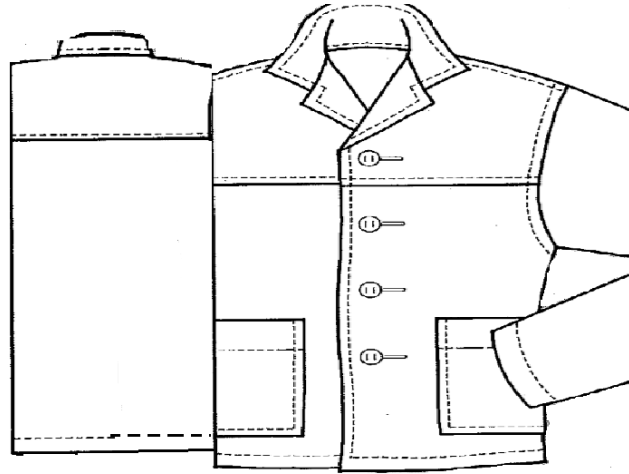
- Spread the pleat according to the depth.
- Trace all the pattern pieces.
- Label the pattern pieces for the front, add the grain line and seam allowance.


OR

4.2 Men's casual jacket



Study the sketch and manipulate the men's casual jacket in FIFTH scale. Use the ladies' jacket block back and front on ADDENDUM C (attached).



- 4.2.1 Submit the planning for the front.  (16)
- 4.2.2 Submit the planning for the back. (14)
- 4.2.3 Submit the final planning for the front and back yoke and patch pocket. (20)
- [50]**

MEASUREMENTS:

Back yoke	10 cm
Front yoke	6 cm
Facing	5 cm
Seam allowance	1,5 cm
Hem allowance	4 cm
Button stand	2,5 cm
Button diameter	2,5 cm



INSTRUCTIONS

Planning

- Use the back and front jacket block.
- Remove 2 cm from front shoulder, add to the back shoulder line.
- Redraw the neckline.
- Draw a back yoke at the back centre 10 cm down from the neck.
- Draw the front yoke 6 cm from the centre front neck point.
- Mark the patch pocket 14 cm width and 16 cm length.
- Add the button stand 2,5 cm and mark the buttonholes.
- Construct an extended facing 5 cm.



Final

- Trace off the back yoke, the front yoke and the patch pockets.
- Add the seam allowance, grainline and label.
- Patch pocket: Add 4 cm to the top edge of the pocket.


QUESTION 5

Construct the standard straight collar in half scale using the following measurements and instructions.

MEASUREMENTS

Neck measurement	40 cm
Button stand	1,5 cm
Button diameter	1,5 cm
Collar depth	4 cm

INSTRUCTIONS

- 1-2 = Half the neck measurement 20 cm to the right
 2-3 = Measurement of button stand 1,5 cm square up
 1-4 = Collar depth 4 cm square up and across to 5
 5-6 = 1,5 cm 
 6-7 = 2-3 (1,5 cm to the left)
 1-8 = $\frac{3}{4}$ measurement of 1-2 (15 cm)
 3-9 = 1,5 cm up
 6-9 = 2-7

Join 8-9 with a curve.


Mark the buttonhole 1,5 cm.

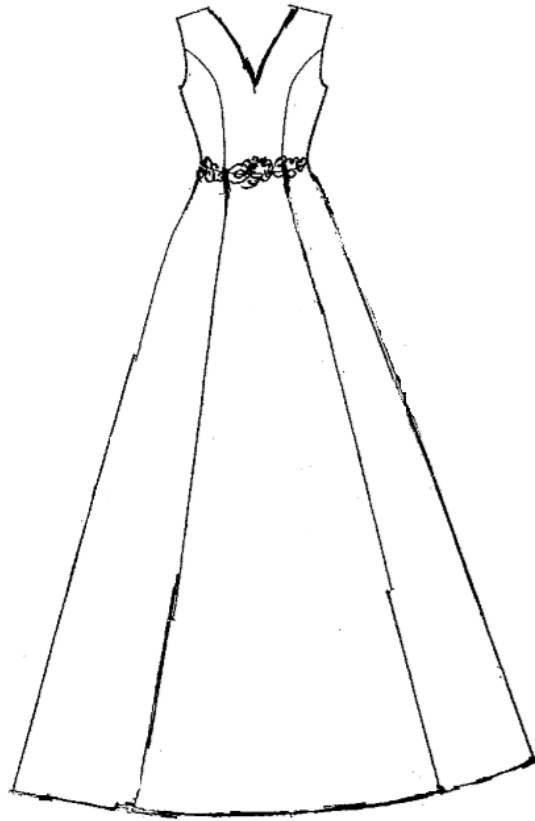
Label the pattern and add the grain line.

Submit the planning of the standard straight collar.

[20]

QUESTION 6

Study the sketch of the dress below. Use ONE piece dress block on ADDENDUM D (attached). In FIFTH scale, manipulate the front of the princess line dress using the following measurements and instructions. 



MEASUREMENTS

Seam allowance	1,5 cm
Hem allowance	2 cm
Facing depth	5 cm



INSTRUCTIONS

Planning

- Mark the front centre.
- Measure down 10 cm from the neckline widening the neckline by 1 cm.
- Redraw the neckline.
- Mark the waistline.
- Measure $\frac{1}{2}$ of the armhole for the princess line and draw the curve line to the bust point.
- Close the bust control dart.
- Draw the princess line.
- Indicate the slash from the armhole through the dart point up to the waist.
- Draw the 5 cm facing, 5 cm at the front centre and side seam.
- Draw the combined facing.
- Extend the princess line up to the hem from the waist suppression dart point to the new hemline.
- Extend the dress length 80 cm from the waist down to the hem.
- Add 5 cm flare at the side seam hemline.
- Add 5 cm flare to each side of the panel line.
- Indicate the slash lines.
- Label the pattern, add the grain line.

Final

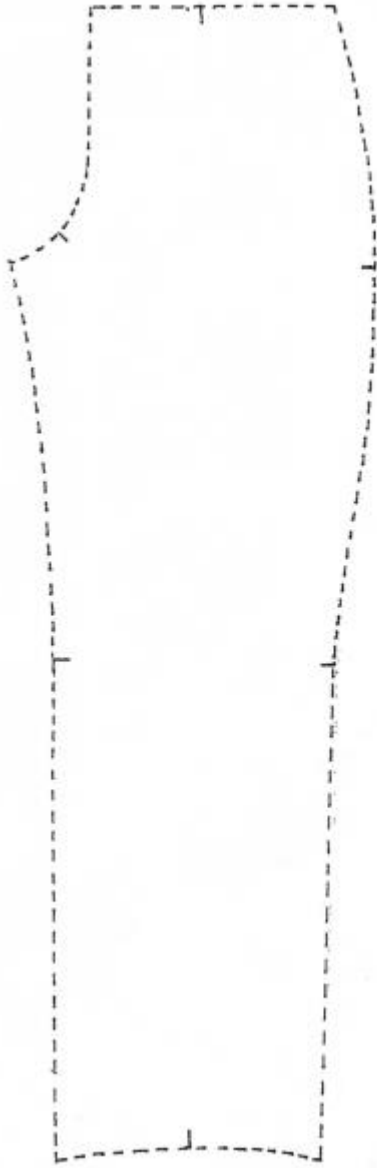
- Trace all the pattern pieces for the front.
- Label all the pattern pieces.
- Add the grain line, seam allowances.

6.1 Submit the planning of the dress front. (25)

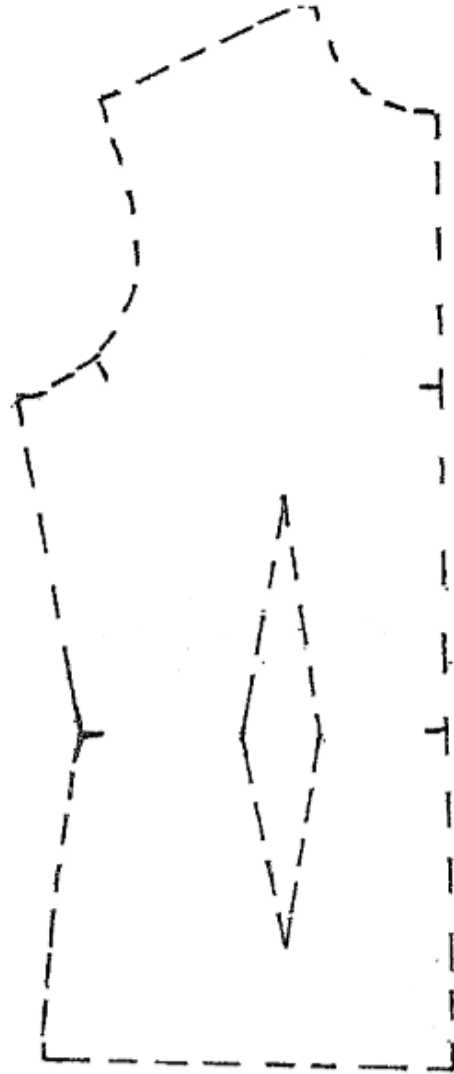
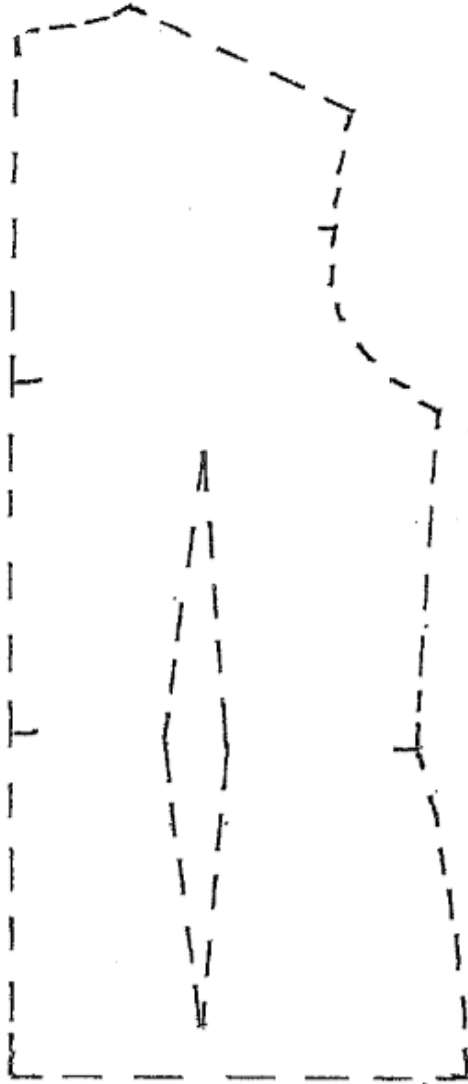
6.2 Submit the final of the dress front. (25)
[50]

TOTAL SECTION B: 150
GRAND TOTAL: 200

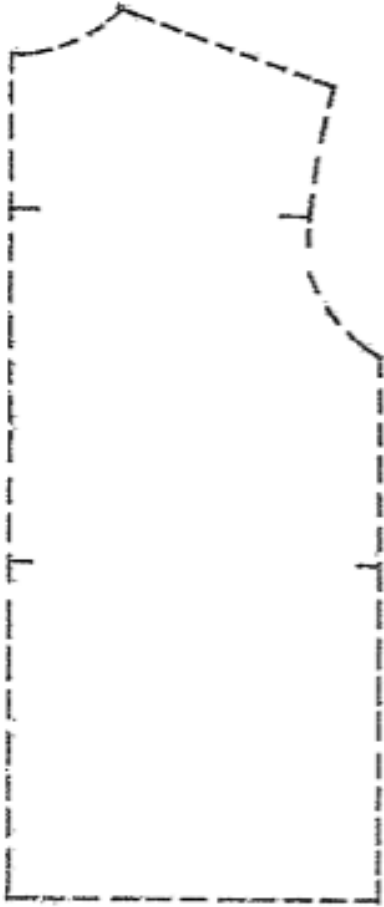
ADDENDUM A



ADDENDUM B



ADDENDUM C



ADDENDUM D

