



**higher education  
& training**

Department:  
Higher Education and Training  
**REPUBLIC OF SOUTH AFRICA**

# **MARKING GUIDELINE**

**NATIONAL CERTIFICATE  
PATTERN CONSTRUCTION N5**

**3 JUNE 2019**

**This marking guideline consists of 12 pages.**

**SECTION A****QUESTION 1**

- |     |        |   |  |
|-----|--------|---|--|
| 1.1 | 1.1.1  | D |  |
|     | 1.1.2  | A |  |
|     | 1.1.3  | B |  |
|     | 1.1.4  | C |  |
|     | 1.1.5  | B |  |
|     | 1.1.6  | A |  |
|     | 1.1.7  | D |  |
|     | 1.1.8  | B |  |
|     | 1.1.9  | C |  |
|     | 1.1.10 | A |  |
- (10)
- |     |       |   |  |
|-----|-------|---|--|
| 1.2 | 1.2.1 | Chest with individual's breath inhaled to expand chest: Take a loose measurement over the chest and around the widest part of the back. |  |
|     | 1.2.2 | The difference between the outside and inside leg lengths: Sit on a hard surface and measure from the waist to the surface.             |  |
|     | 1.2.3 | Close measurement plus 5 cm/2" around the widest part of the upper arm.   |  |
|     | 1.2.4 | Length measurement taken from the shoulder edge bone down to the wrist: Needed for shirt drafts.  |  |
|     | 1.2.5 | Measure from the base of the neck below the ear to the bone at the extreme edge of the shoulder.  |  |
- (5 × 2) (10)  
**[20]**

**QUESTION 2**

- |     |       |   |
|-----|-------|---|
| 2.1 | 2.1.1 | Measurements taken directly on a figure   |
|     | 2.1.2 | The most protruding part of the actual bust   |
|     | 2.1.3 | A fully completed styled pattern with seam allowances added and all relevant pattern markings placed in correct positions |
|     | 2.1.4 | Fashioned sections of a styled pattern cut on paper from basic foundation blocks without seam allowances                  |

2.1.5 The bust, chest, hip/seat dimensions are taken as the basic dimension of which certain proportions are used to draft a basic block to fit an average figure.

2.1.6 Draw vertical and lateral lines onto paper or card of certain dimensions taken on a human figure or from sizing charts of average figure dimensions.

(6 × 3) (18)

- 2.2 2.2.1
- Centre shoulder
  - Underarm
  - Armhole/Armhole
  - Neckline
  - Centre front
  - French
  - Combined dart

(Any THREE)

- 2.2.2
- Pocket bag
  - Pocket binding/strip
  - Pocket mouth piece
  - Pocket facing
  - Pocket bag facing

(Any THREE)

- 2.2.3
- Waist measurement
  - Hip measurement
  - Hip depth
  - Skirt length

(Any THREE)

- 2.2.4
- Knife pleat
  - Box pleat
  - Inverted pleat
  - Accordion pleats
  - Sunray pleats
  - Taper pleats

(Any THREE)

(4 × 3)

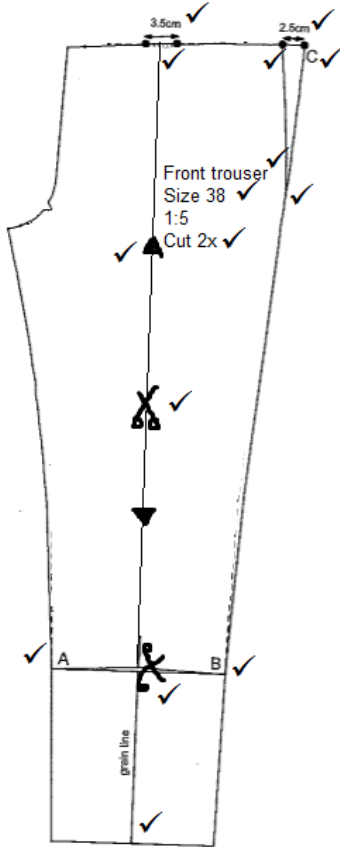
(12)  
**[30]**

**TOTAL SECTION A: 50**

SECTION B

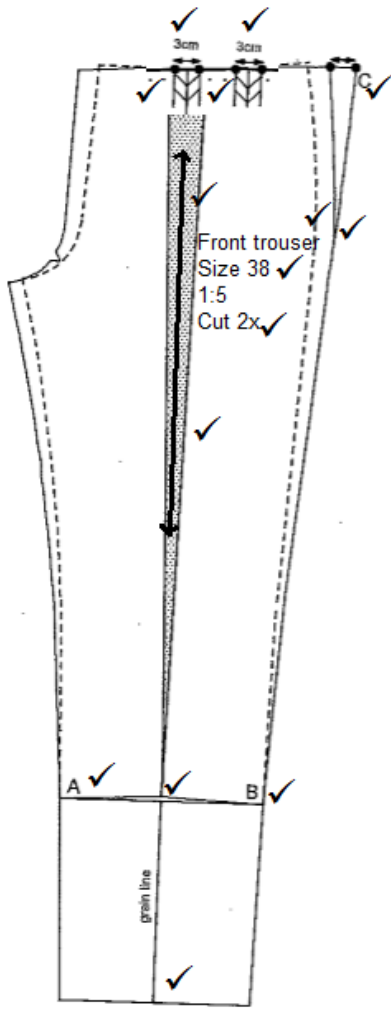
QUESTION 3

3.1



(15)

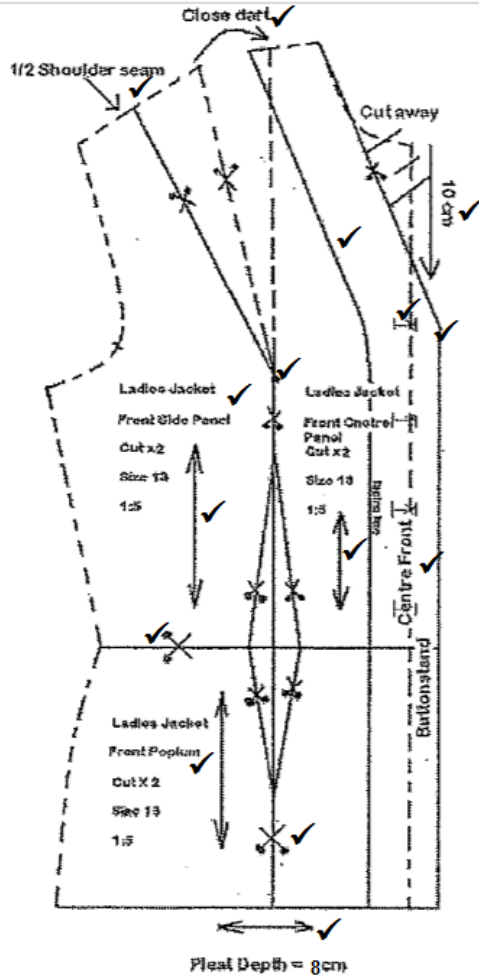
3.2



(15)  
[30]

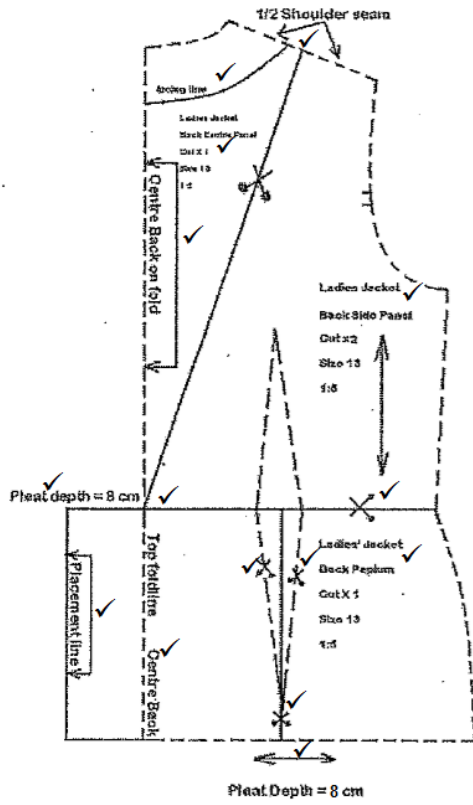
QUESTION 4

4.1 4.1.1



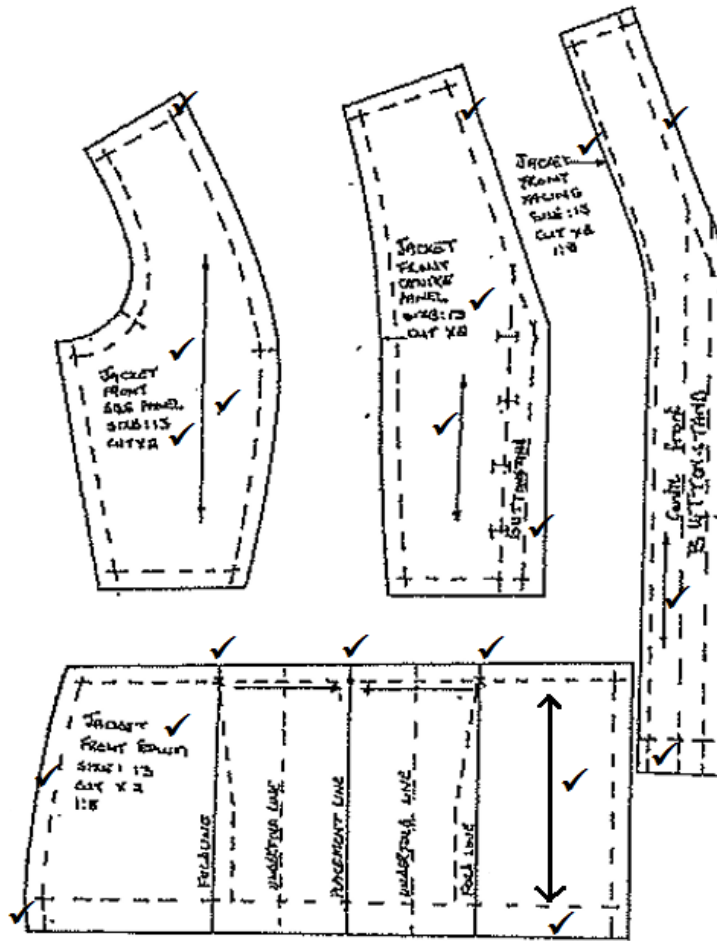
(15)

4.1.2



(15)

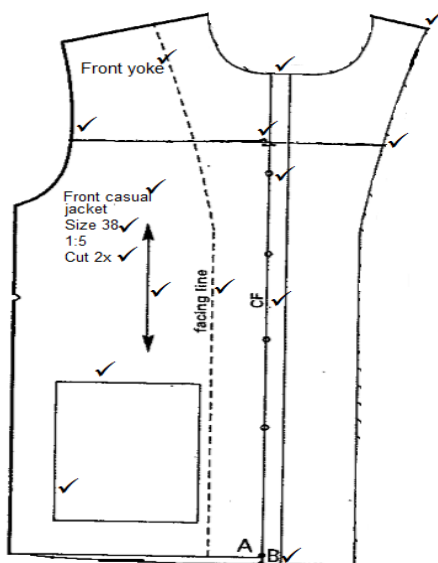
4.1.3



(20)  
[50]

OR

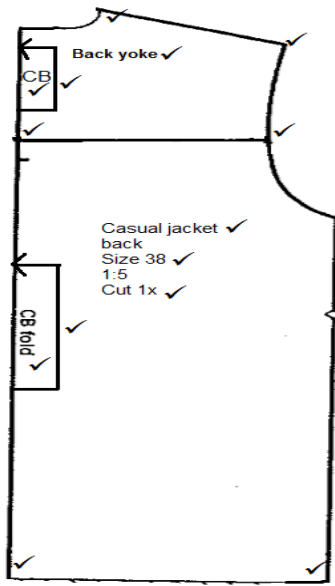
4.2 4.2.1



(16)

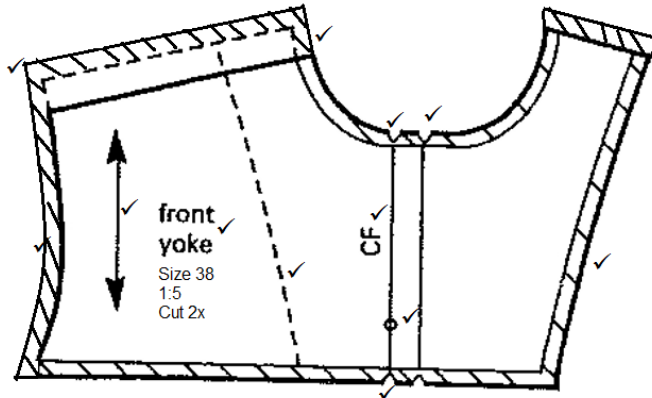


4.2.2

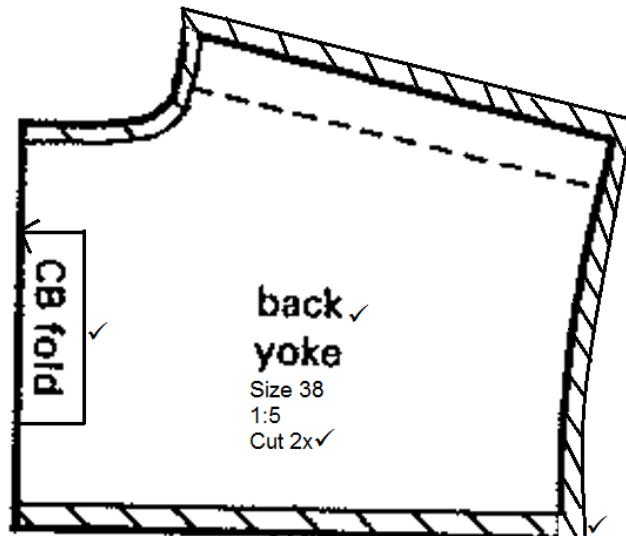


(14)

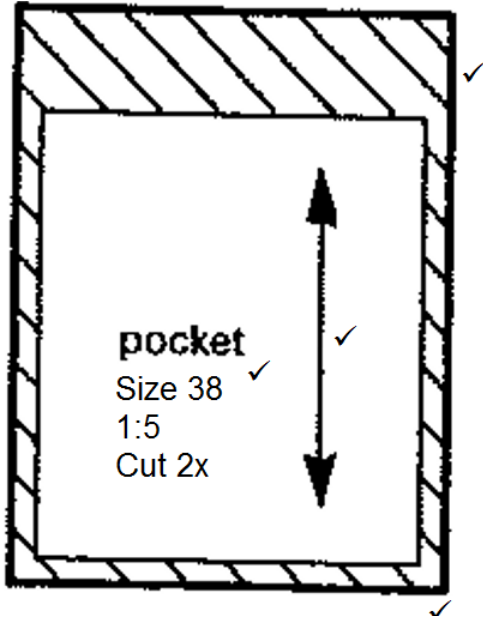
4.2.3 Front yoke



Back yoke



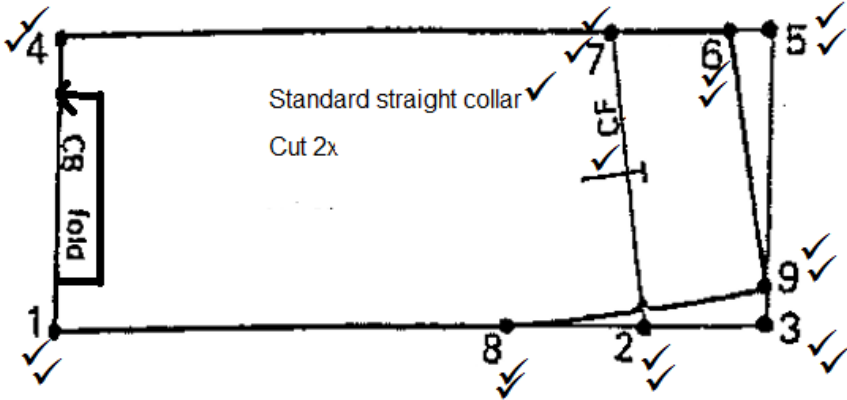
Pocket



(20)  
[50]

QUESTION 5

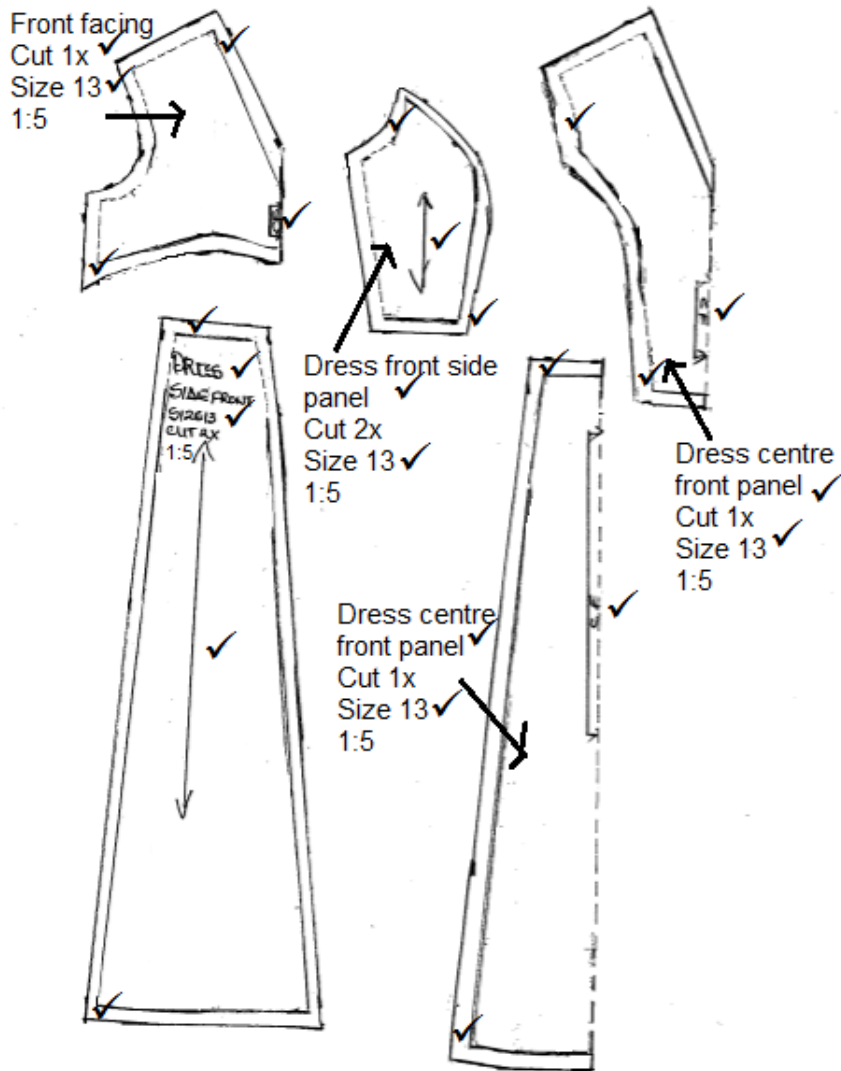
Standard straight collar



[20]



6.2



(25)  
[50]

**TOTAL SECTION B: 150**  
**GRAND TOTAL: 200**