



**higher education
& training**

Department:
Higher Education and Training
REPUBLIC OF SOUTH AFRICA

MARKING GUIDELINE

NATIONAL CERTIFICATE

PATTERN CONSTRUCTION N5

11 JUNE 2018

This marking guideline consists of 10 pages.

SECTION A**QUESTION 1**

- 1.1 C
- 1.2 H
- 1.3 I
- 1.4 A
- 1.5 B
- 1.6 J
- 1.7 E
- 1.8 G
- 1.9 F
- 1.10 D

(10 × 1) [10]

QUESTION 2

- 2.1 D
- 2.2 D
- 2.3 C
- 2.4 B
- 2.5 D
- 2.6 C
- 2.7 A
- 2.8 B
- 2.9 A
- 2.10 A

(10 × 1) [10]

QUESTION 3

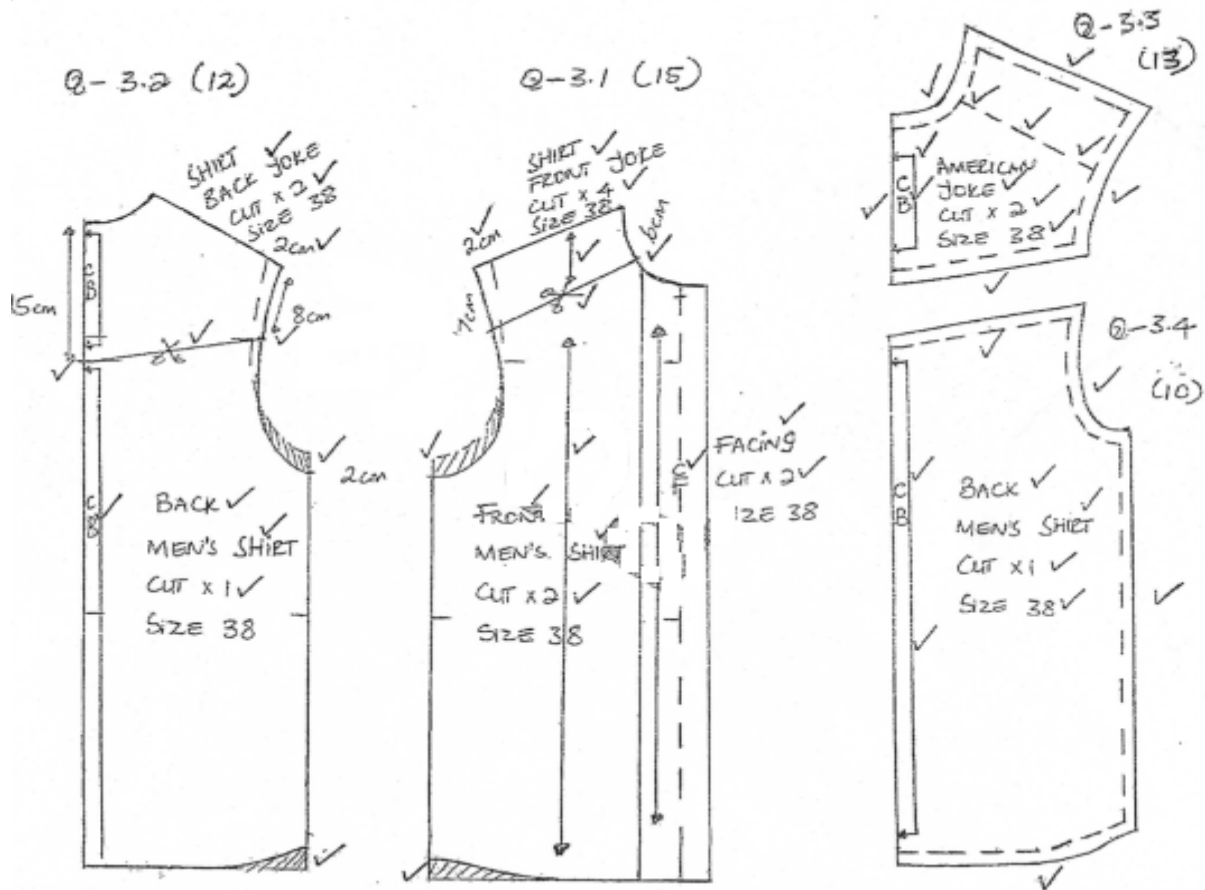
- 3.1 3.1.1 The drawing of vertical and lateral lines onto paper or card, of certain dimensions taken on a human figure (or from sizing charts of average figure dimensions) and forming on these lines the desired outline of a basic block pattern.
- 3.1.2 The most protruding part of the actual bust. Through it or in line with it must run all panel lines when styling front bodice patterns. Darts, pleats, gathers or tucks must also be in line with the bust prominence.
- 3.1.3 Darts found at the shoulder of the front bodice and the waist of the skirt block. Their function in pattern is to give the appropriate amount of ease necessary over the bust and over the posterior of a female.

PATTERN CONSTRUCTION N5

	3.1.4	The shaping of the side seams, and the darting, front and back, of a garment to make it fit the figure at the waistline.		
	3.1.5	Front and back pitches marked on basic bodice blocks at the armscye so that necessary measurements can be taken to draft the basic sleeve. Pitch marks on styled patterns are used as a guide for the correct hanging of sleeves. The back pitch line at the cuff edge of a long sleeve is the correct position for a placket opening and cuff fastening.	(5 × 3)	(15)
3.2	3.2.1	<ul style="list-style-type: none"> • around neck • around chest • centre back to waist • scye depth • natural waist 	(Any 3 × 1)	(3)
	3.2.2	Scale = half chest measurement (96,5 cm/2) = 48,25 cm		(2)
3.3	3.3.1	dart		
	3.3.2	knife pleats		
	3.3.3	gathers		
	3.3.4	squaring		
	3.3.5	two piece	(5 × 2)	(10)
				[30]
			TOTAL SECTION A:	50

SECTION B

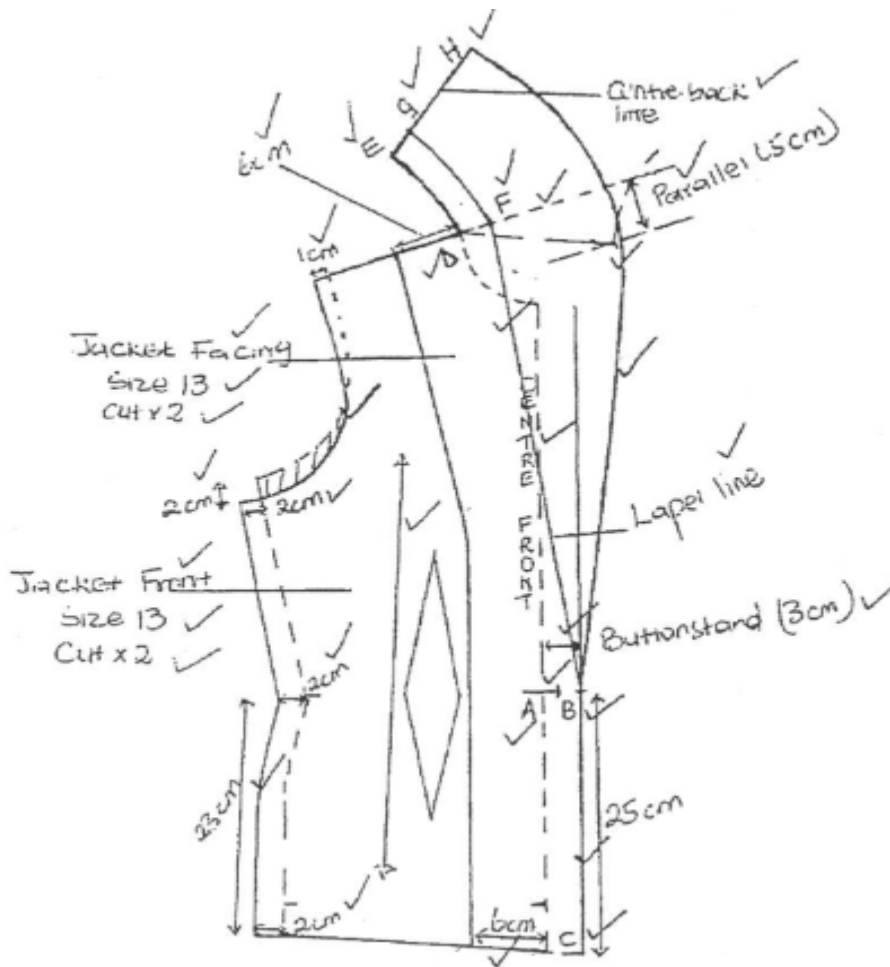
QUESTION 4



[50]

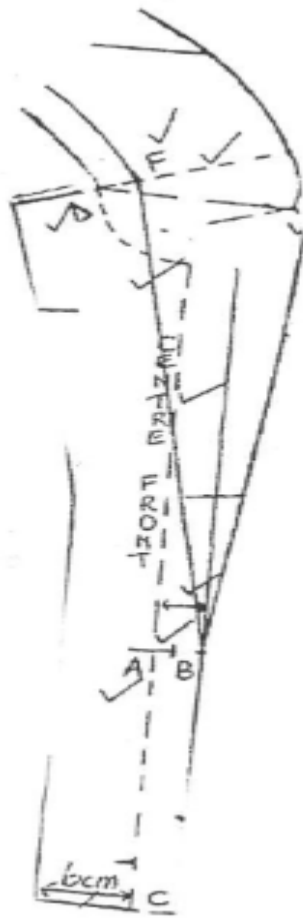
QUESTION 5

5.1 5.1.1



(35)

5.1.2

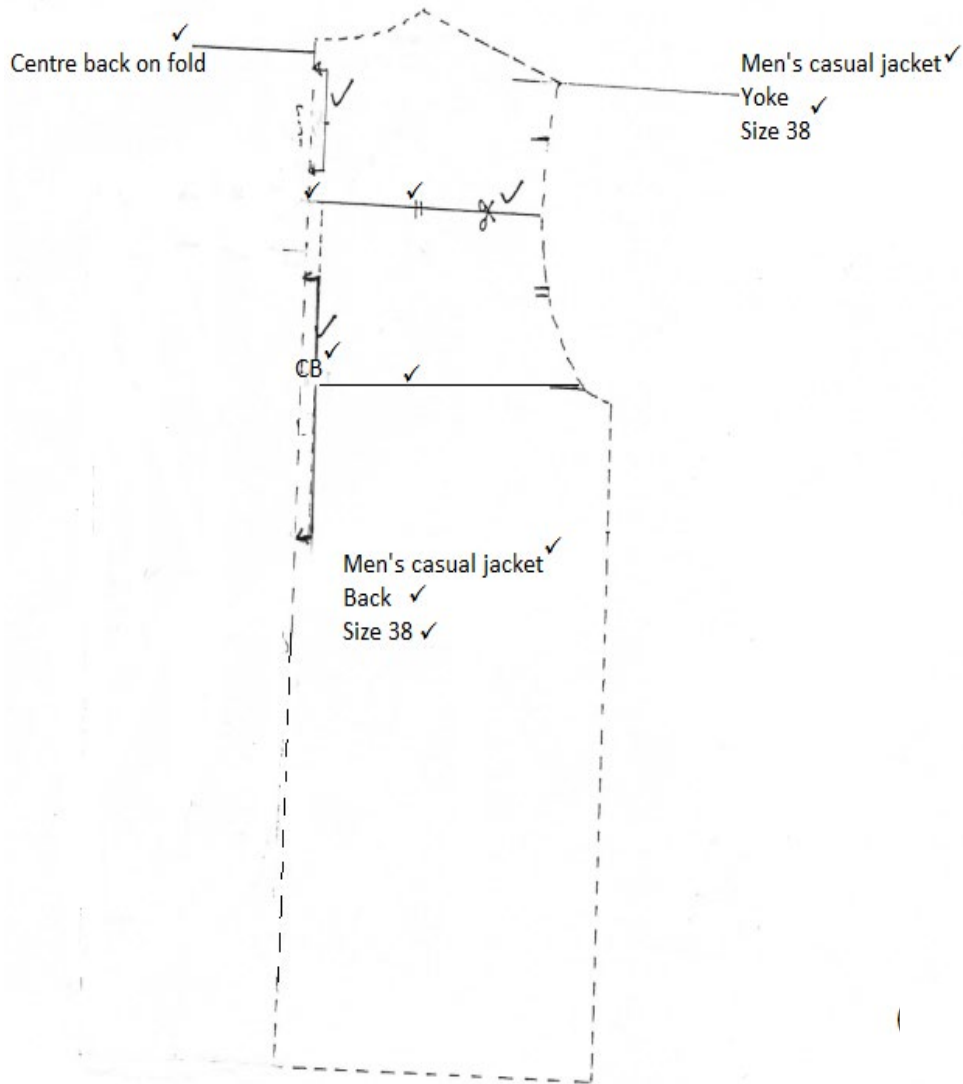


(15)

OR

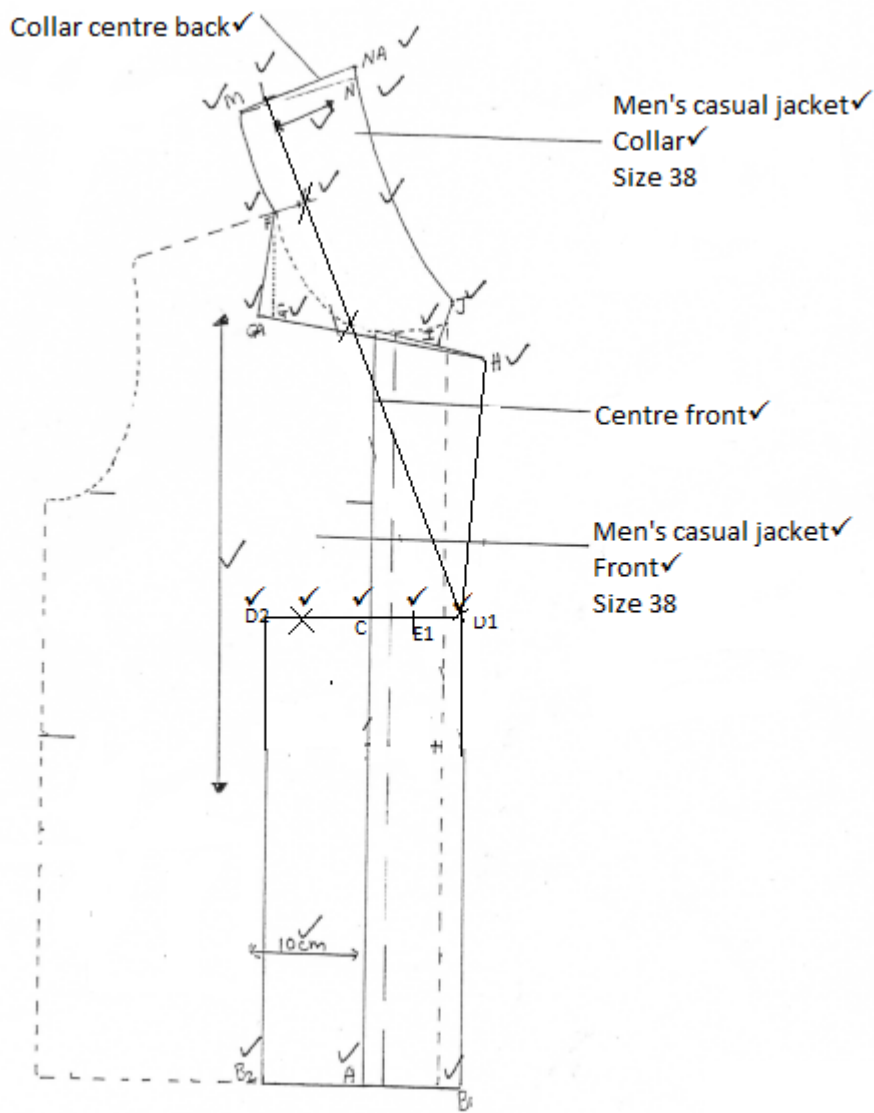
PATTERN CONSTRUCTION N5

5.2 5.2.1



(21)

5.2.2

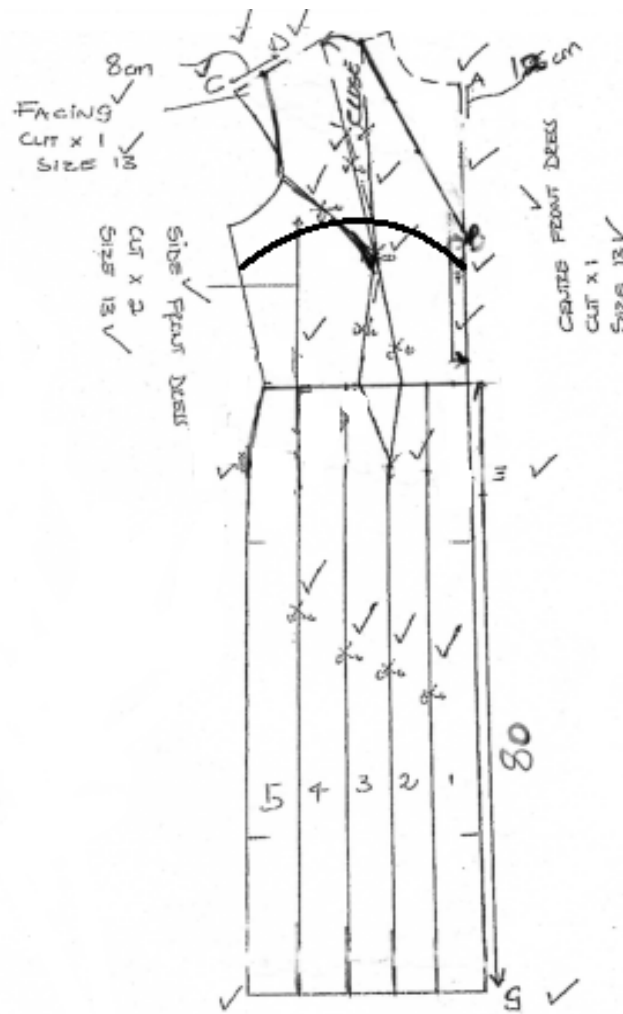


(29)
[50]

PATTERN CONSTRUCTION N5

QUESTION 6

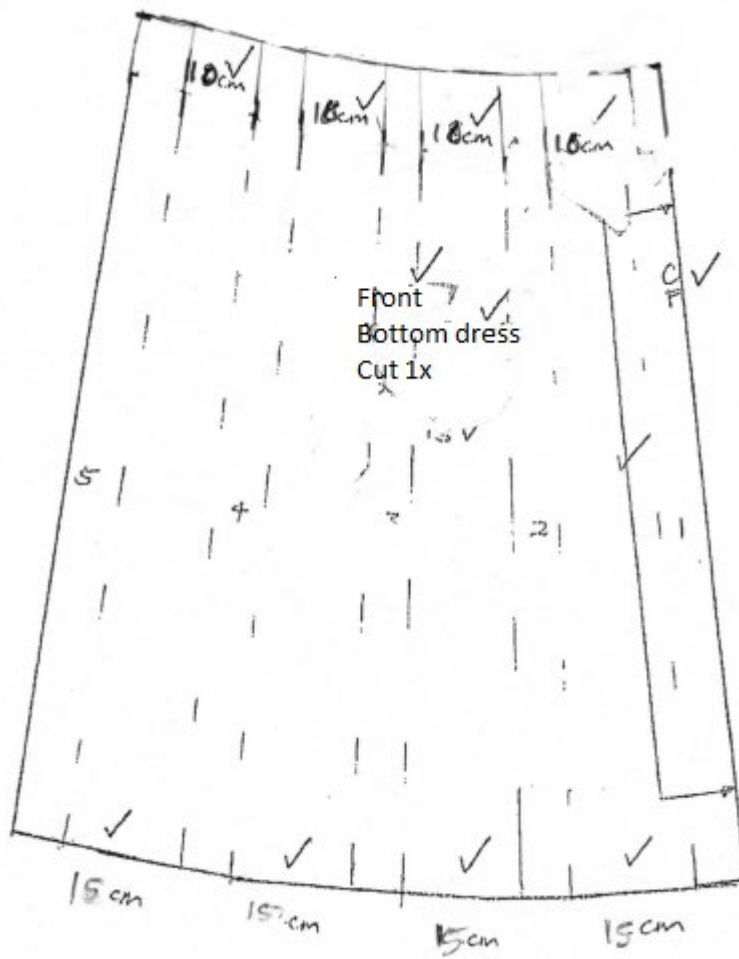
6.1



(30)

PATTERN CONSTRUCTION N5

6.2



(20)
[50]

TOTAL SECTION B: 150
GRAND TOTAL: 200