



**higher education  
& training**

Department:  
Higher Education and Training  
**REPUBLIC OF SOUTH AFRICA**

# **NASIENRIGLYN**

## **NASIONALE SERTIFIKAAT PATROONKONSTRUKSIE N5**

**2 Oktober 2020**

**Hierdie nasienriglyn bestaan uit 10 bladsye.**

**AFDELING A****VRAAG 1**

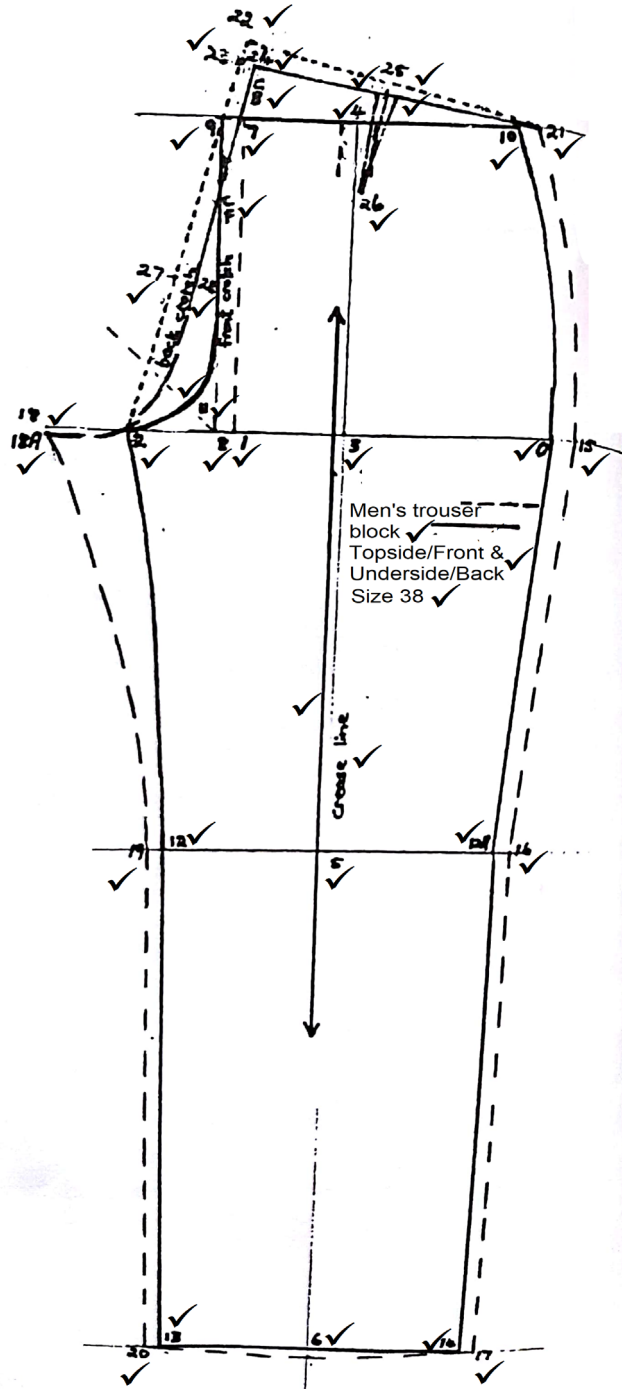
|     |        |        |          |             |
|-----|--------|--------|----------|-------------|
| 1.1 | 1.1.1  | C      |          |             |
|     | 1.1.2  | B      |          |             |
|     | 1.1.3  | D      |          |             |
|     | 1.1.4  | B      |          |             |
|     | 1.1.5  | A      |          |             |
|     | 1.1.6  | D      |          |             |
|     | 1.1.7  | C      |          |             |
|     | 1.1.8  | B      |          |             |
|     | 1.1.9  | A      |          |             |
|     | 1.1.10 | D      |          |             |
|     |        |        | (10 × 1) | (10)        |
| 1.2 | 1.2.1  | F      |          |             |
|     | 1.2.2  | K      |          |             |
|     | 1.2.3  | A      |          |             |
|     | 1.2.4  | D      |          |             |
|     | 1.2.5  | L      |          |             |
|     | 1.2.6  | G      |          |             |
|     | 1.2.7  | B      |          |             |
|     | 1.2.8  | I      |          |             |
|     | 1.2.9  | E      |          |             |
|     | 1.2.10 | J      |          |             |
|     |        |        | (10 × 1) | (10)        |
| 1.3 | 1.3.1  | Waar   |          |             |
|     | 1.3.2  | Onwaar |          |             |
|     | 1.3.3  | Waar   |          |             |
|     | 1.3.4  | Onwaar |          |             |
|     | 1.3.5  | Onwaar |          |             |
|     |        |        | (5 × 1)  | (5)         |
|     |        |        |          | <b>[25]</b> |

**VRAAG 2**

|     |       |   |         |             |
|-----|-------|---|---------|-------------|
| 2.1 | 2.1.1 | Neem 'n noupassende ('close') maar gemaklike maat onder om die nek  |         |             |
|     | 2.1.2 | Geneem aan die sykant van lyf van middellyflyn vloer toe  |         |             |
|     | 2.1.3 | Die verskil tussen die buite- en binnebeenlengtes <b>OF</b> Sit op 'n harde oppervlak en meet vanaf middellyf tot oppervlak |         |             |
|     | 2.1.4 | Noupassende maat om die wydste deel van die boarm   |         |             |
|     | 2.1.5 | Noupassende, gemaklike maat geneem om die wydste deel van die been onder  | (5 × 3) | (15)        |
| 2.2 | 2.2.1 | Gekombineerde binnesak voor ('pocket bag')  |         |             |
|     | 2.2.2 | Sakvoering  |         |             |
|     | 2.2.3 | Binnesak agter  |         |             |
|     | 2.2.4 | Binnesakomboorsel agter   |         |             |
|     | 2.2.5 | Binnesak  | (5 × 2) | (10)        |
|     |       |   |         | <b>[50]</b> |
|     |       | <b>TOTAAL AFDELING A:</b>   |         | <b>50</b>   |

AFDELING B

VRAAG 3

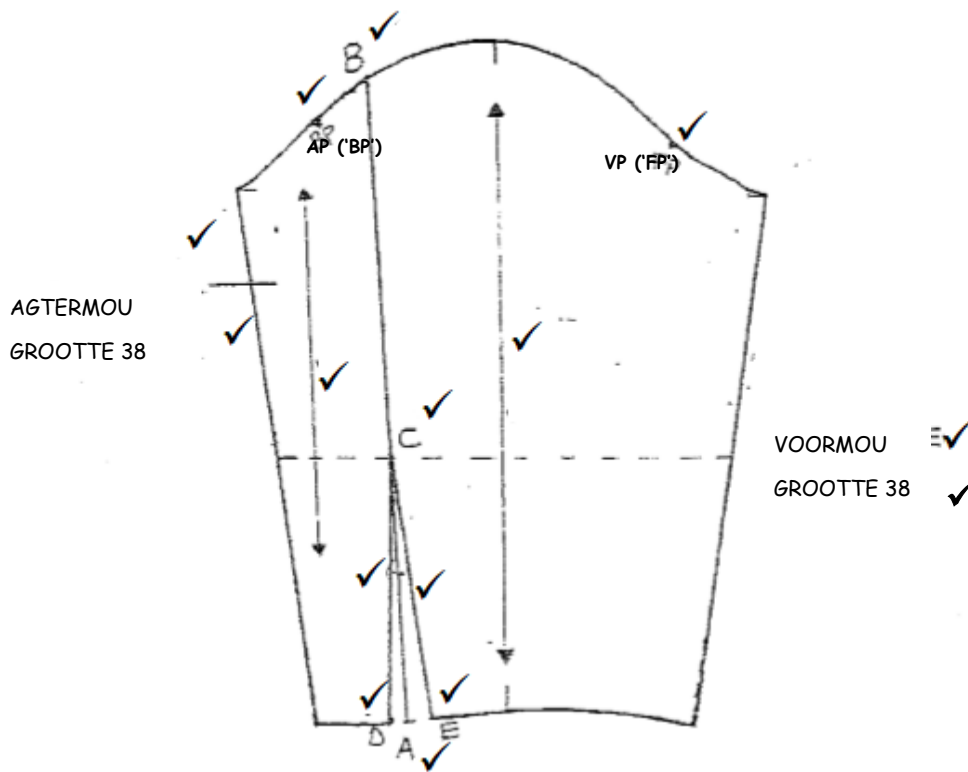


- Manslangbroek-  
pant ✓
- Bokant/Voor &  
Ondersy/Agter ✓
- Grootte 38 ✓

[40]

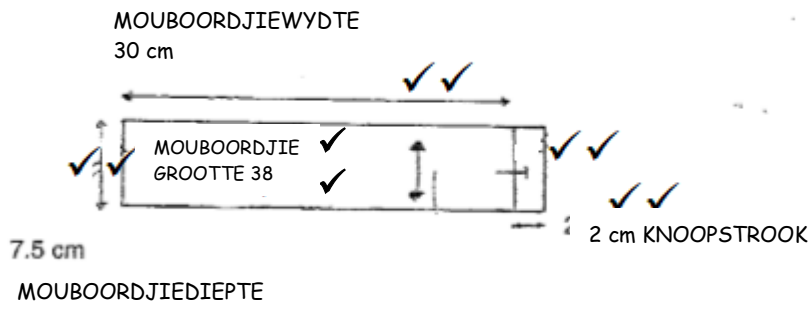
VRAAG 4

4.1



(15)

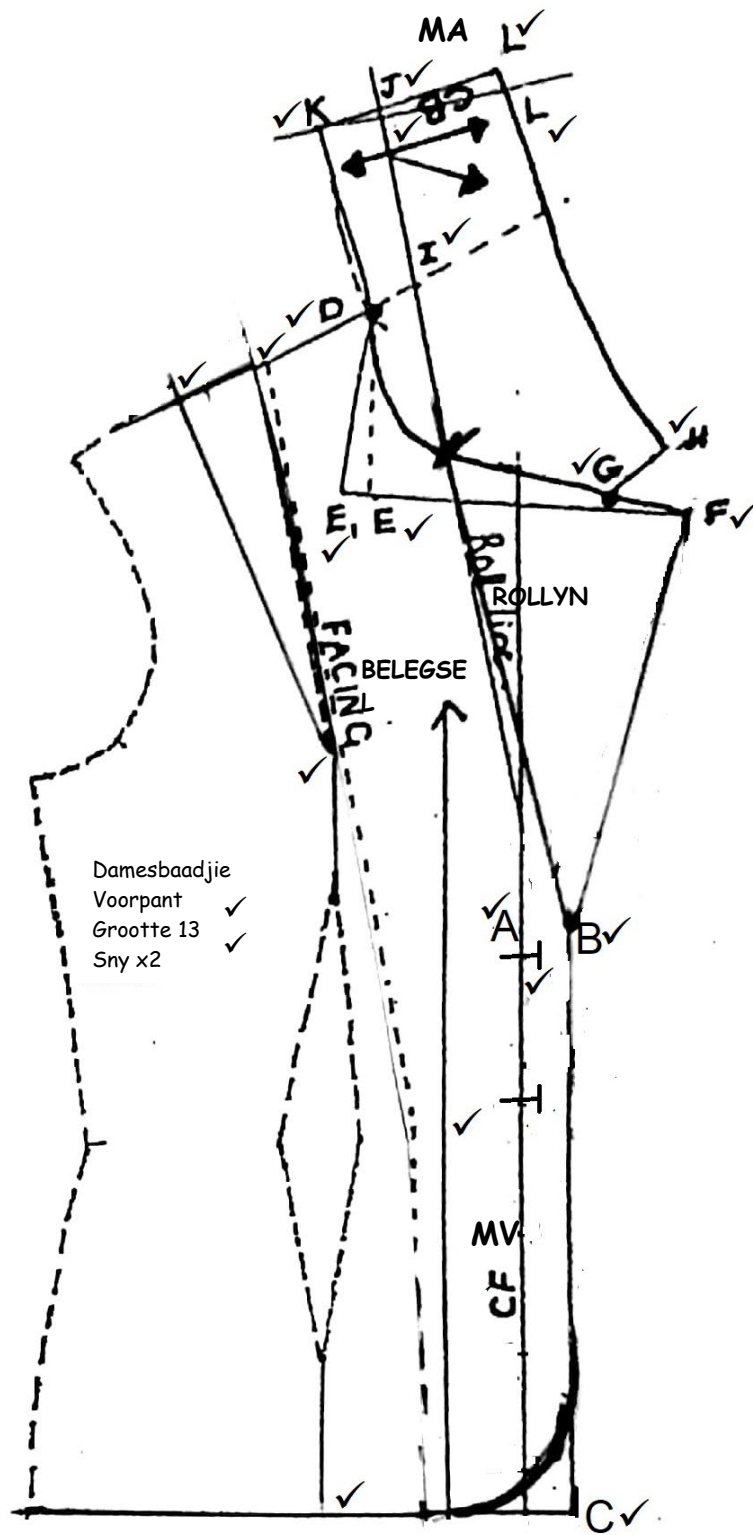
4.2



(10)  
[25]

VRAAG 5

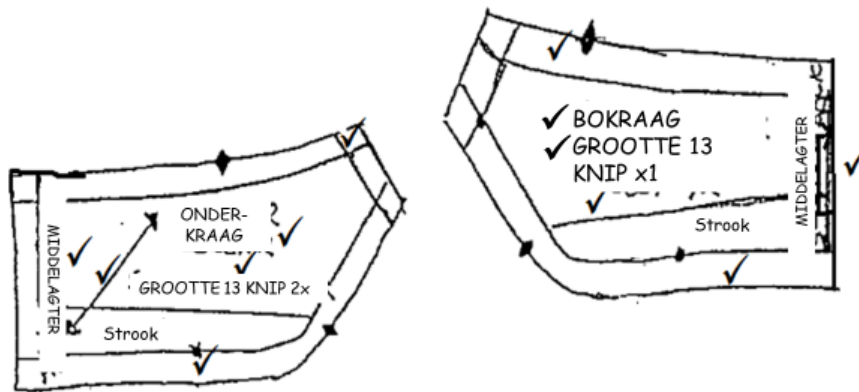
5.1.1



Damesbaadjie  
Voorpant ✓  
Grootte 13 ✓  
Sny x2 ✓

(23)

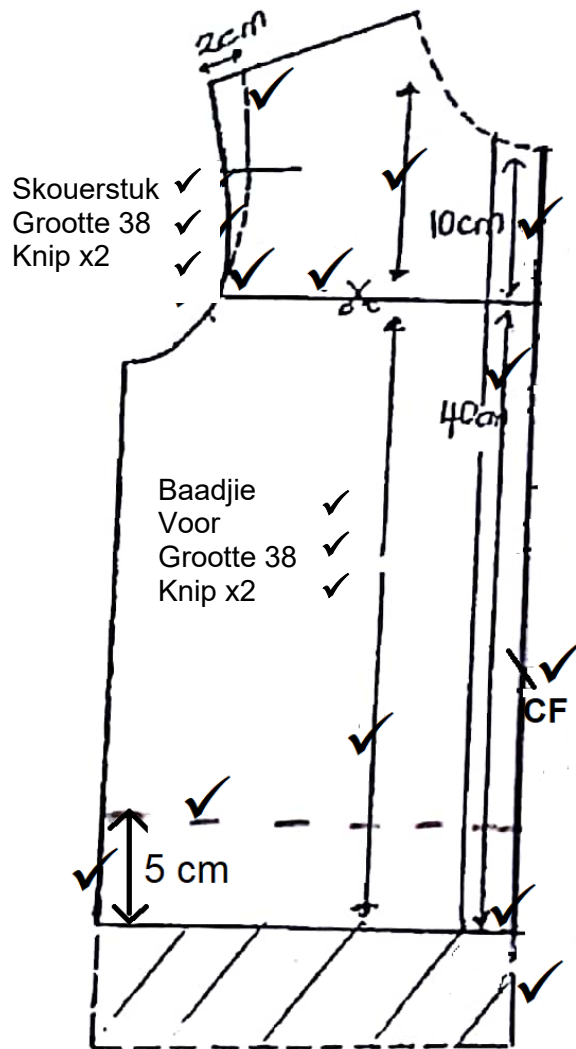
5.1.2



(12)  
[35]

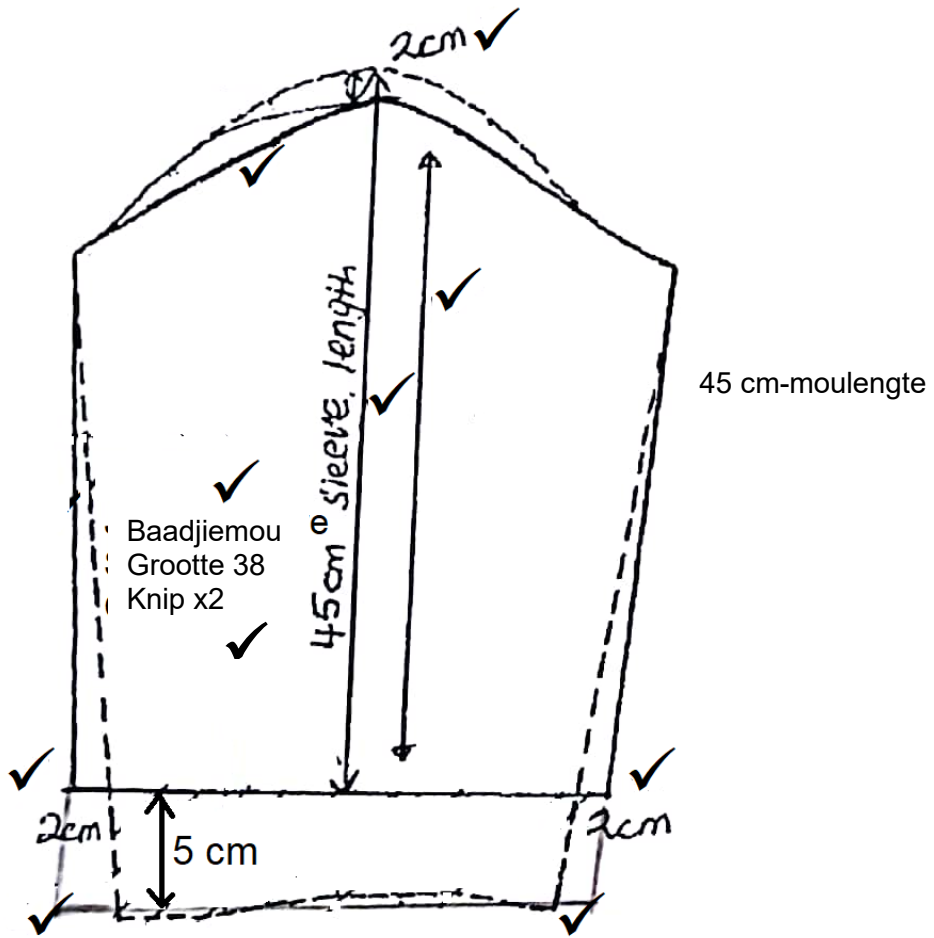
OF

5.2 5.2.1



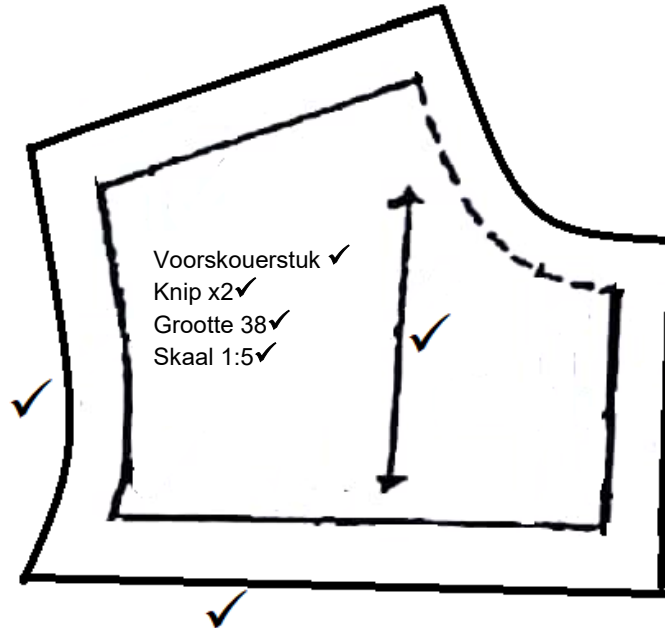
(18)

5.2.2



(10)

5.2.3

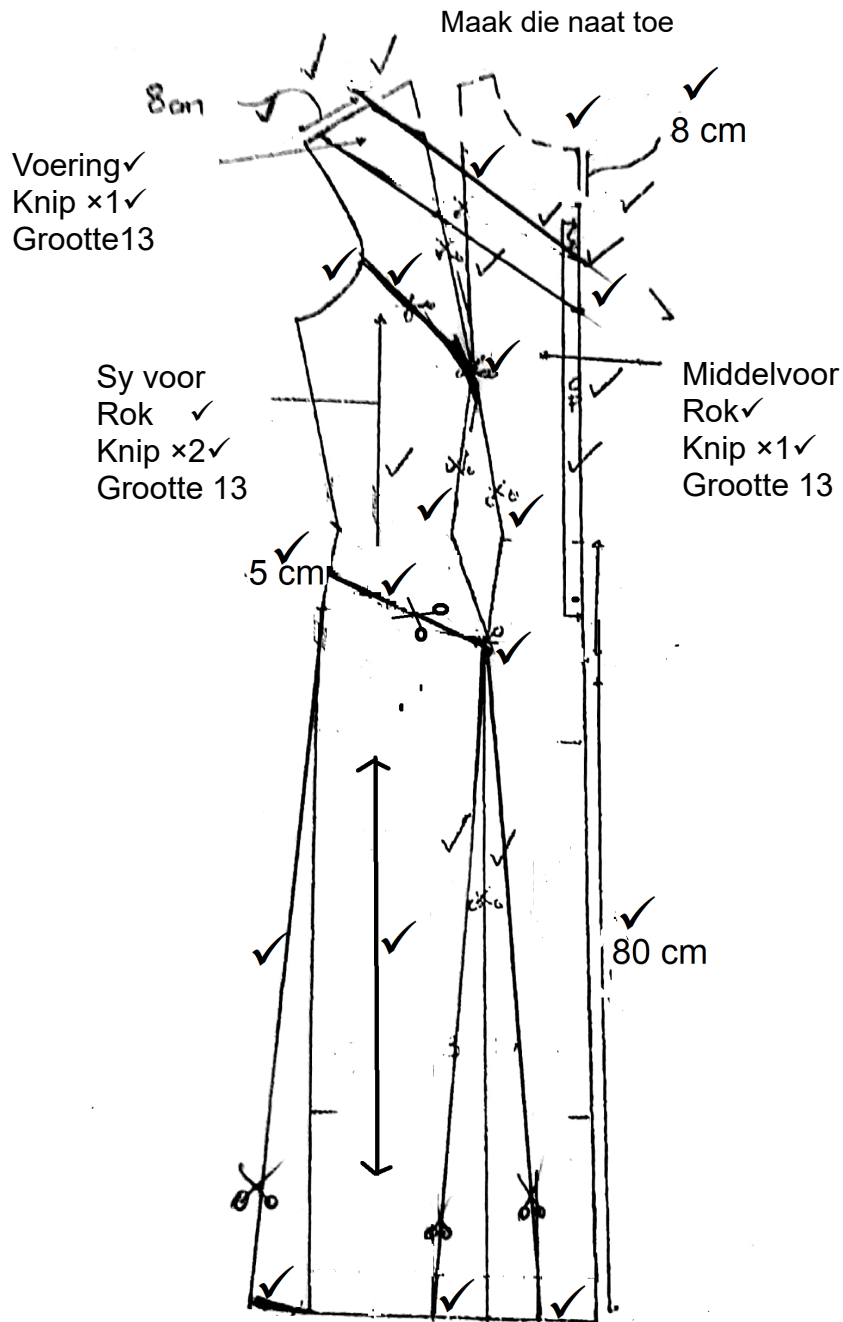


(7)



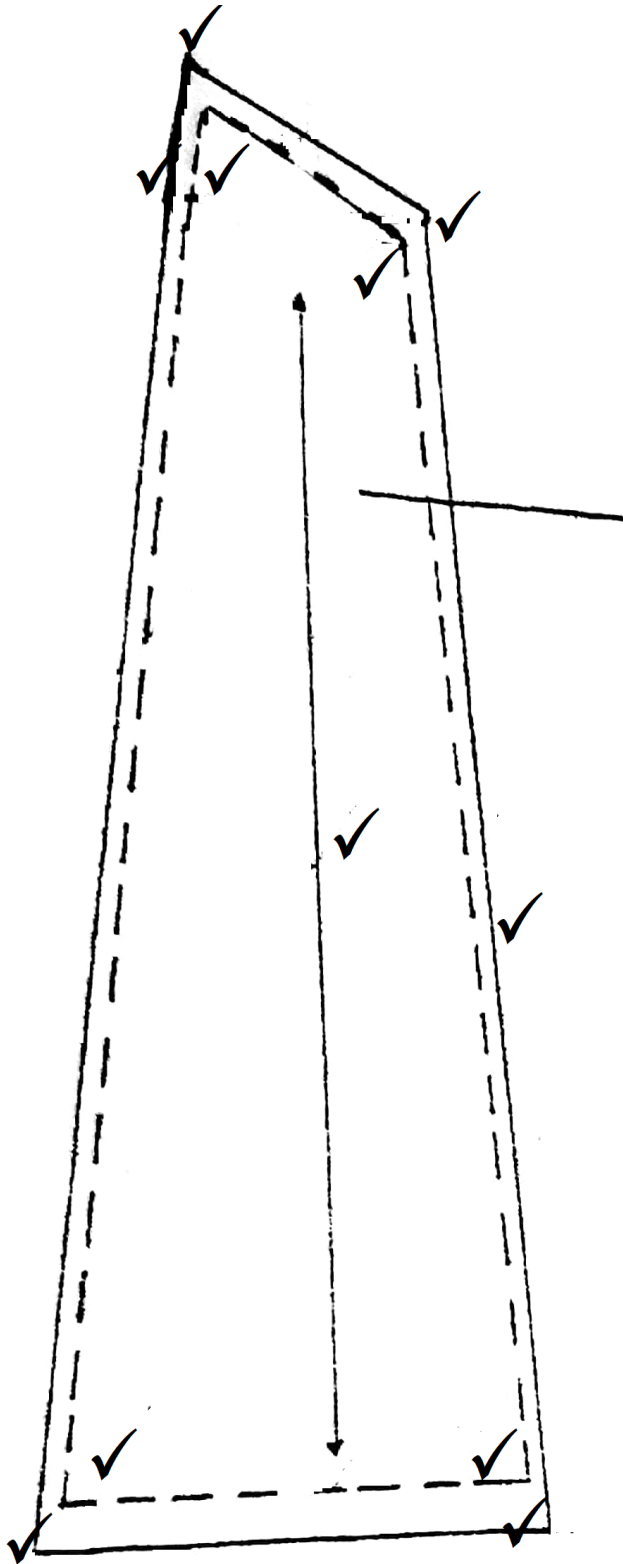
**VRAAG 6**

6.1



(35)

6.2



ONDERSTE SYNAAT ✓  
ROK VOOR ✓  
GROOTTE 13 ✓  
KNIP ×2 ✓

(15)  
[50]

TOTAAL AFDELING B: 150  
GROOTTOTAAL: 200