



# higher education & training

---

Department:  
Higher Education and Training  
**REPUBLIC OF SOUTH AFRICA**

## **NATIONAL CERTIFICATE**

## **PATTERN CONSTRUCTION N5**

(10010515)

**21 November 2019 (X-Paper)**  
**09:00–12:00**

**Candidates need drawing instruments.**

**Calculators may be used.**

**This question paper consists of 11 pages and 4 addenda.**

**DEPARTMENT OF HIGHER EDUCATION AND TRAINING**  
**REPUBLIC OF SOUTH AFRICA**  
NATIONAL CERTIFICATE  
PATTERN CONSTRUCTION N5  
TIME: 3 HOURS  
MARKS: 200



---

**INSTRUCTIONS AND INFORMATION**

1. Answer ALL the questions.
  2. Read ALL the questions carefully.
  3. Number the answers according to the numbering system used in this question paper.
  4. Write neatly and legibly.
-

**SECTION A****QUESTION 1**





Choose a description from COLUMN B that matches a term in COLUMN A. Write only the letter (A–J) next to the question number (1.1–1.10) in the ANSWER BOOK.

COLUMN A		COLUMN B	
1.1	Dart intake	A	curve of the body below
1.2	Grainlines 	B	extra allowance added to figure measurements
1.3	Control dart	C	space between the two legs to take up fullness and release fabric where it is needed
1.4	Hip prominence	D	specific point on the pattern, for example bust point
1.5	Ease	E	measurement from the waist to the crotch
1.6	Waist suppression	F	distance between the fitting and cutting lines on pattern
1.7	Body rise	G	process to manufacture a basic pattern block
1.8	Construction 	H	indicators of how pattern pieces should be laid on fabric
1.9	Seam allowance	I	shoulder dart on the basic bodice front
1.10	Pivotal point	J	shaping of the side seams and the darting of the front and back bodice to make it fit the figure at the waist line

(10 × 1)

**[10]**

**QUESTION 2**


- 2.1 Give ONE word or term for each of the following descriptions. Write only the word or term next to the question number (2.1.1–2.1.10) in the ANSWER BOOK.
- 2.1.1 A tapered seam used to give fullness at one end and take away fullness at the other hand. 
- 2.1.2 Flat pleats all facing the same direction and lying side by side.
- 2.1.3 Soft, evenly spread folds, created by drawing a larger piece of fabric to fit onto a smaller piece of fabric.
- 2.1.4 The drawing of a line at a right angle to another existing line, is called ...
- 2.1.5 The most suitable sleeve for a ladies' tailored jacket 
- 2.1.6 To draw a line, vertical or diagonally the very same distance of the first line.
- 2.1.7 To divide a 90° angle into two 45° angles.
- 2.1.8 A specific fixed point on the pattern that you swing the arc from this point. 
- 2.1.9 The measurement taken from the extreme edge of the shoulder down to the wrist.
- 2.1.10 The measurement taken from the neck curve to shoulder edge. (10 × 2) (20)
- 2.2 2.2.1 State THREE measurements needed when drafting men's shirt block. (3)
- 2.2.2 List THREE measurements needed when drafting men's trouser block.  (3)
- 2.2.3 List any FOUR bits of information or labelling you add onto the final pattern. (4)
- [30]**

**QUESTION 3**

Define the following pattern construction terms:

3.1 Control dart

3.2 Waist suppression dart

3.3 Dart manipulation 

3.4 Slashing

3.5 Flare

(5 × 2) [10]

**TOTAL SECTION A: 50**

**SECTION B****QUESTION 4**

Draft the men's active wear shirt sleeve block, size 38 on fifth scale. Use the following measurements and instructions.

MEASUREMENTS 

Circumference of armhole : 51 cm  
 Forearm sleeve length : 45,5 cm  
 SCALE : Half chest ( $96,5 \text{ cm}^2 = 48,25 \text{ cm}$ )


Square a line down the centre of the page. Mark point 0 on this squared line 45 cm from the top edge of the page.

0–1 = One quarter of total armhole circumference measured downwards (12,75 cm).

Square to the left and right of point 1. 




1–2 = Forearm sleeve length measured downwards (45,5 cm).

0–3 = The measurement 10 to 9 on the shirt block minus 6 mm measured to the left of 0 on the line squared out from point 1 (24,4 cm).  
 Join 0 to 3.

0–4 = The measurement 16–19 on the shirt block minus 6 mm measured to the right of 0 on the line squared out from point 1 (25,5 cm). 

3–5 = One third of the measurement 0–3 (8 cm) on the 0–3 line.

0–6 = One third of the measurement 0–3 (8 cm) on the 0–3 line.

- 0–7 = One third of the measurement 0–4 (8,8 cm) on the 0–4 line.
- 4–8 = One third of the measurement 0–4 (8,8 cm) on the 0–4 line. 
- 2–9 = One third of the scale minus 1,2 cm squared to the left (14,9 cm).  
Join points 3 and 9.
- 2–10 = One third of the scale minus 1,2 cm squared to the left (14,9 cm).  
Join points 4 and 10.
- 2–11 = One sixth of the scale measured to the left for cuff placket opening position (8 cm).  
Square upwards from point 11 for 12,5 cm.
- 5–12 = 2 cm squared upwards on the 0 to 3 line. 
- 6–13 = 2,5 cm squared upwards on the 0 to 3 line.
- 7–14 = 2 cm squared upwards on the 0 to 4 line.  
Curve for sleeve head from 3 upwards through 12 and 13 to 0 and downwards through 14 and 8 to 4. Hollow out sleeve head 6 mm between 8 and 4.
- 2–15 = 7,5 cm measured to the right. 
- 15–15A = 1 cm squared upwards.  
Curve cuff edge upwards from point 11 through 15A to point 10.  
Mark in grain line parallel to sleeve centreline and label the block

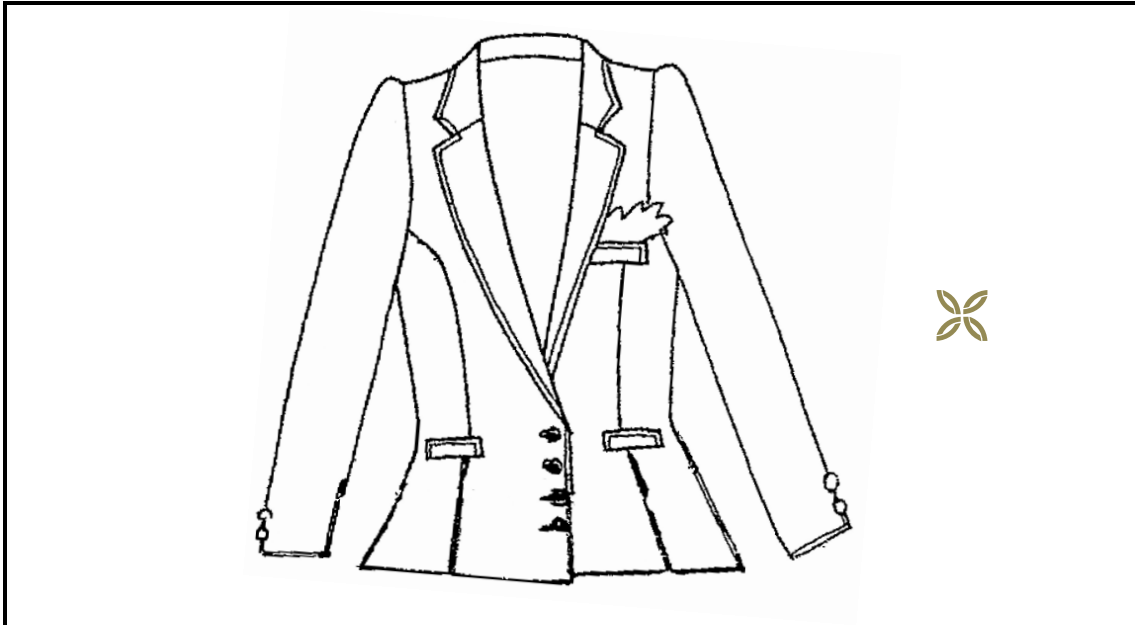
**[25]**

### QUESTION 5

Answer only ONE question. Choose either QUESTION 5.1 or 5.2



5.1 Study the sketch below and manipulate the ladies' jacket with tailored collar and princess line in fifth scale. Use the ladies' jacket block on ADDENDUM A.



5.1.1 Submit the planning for the front jacket. (30)

5.1.2 Submit the final for the front facing, top collar and under collar. (20)  
**[50]**



### MEASUREMENTS

Seam allowance	1,5 cm
Hem allowance	4 cm
Button stand	2 cm
Button diameter	2 cm
Button spacing	7 cm



## INSTRUCTIONS


## Planning

- A = Breakpoint as desired on the centre front  
Mark buttonhole positions 
- AC = 2 cm squared to the right from breakpoint for wrap.  
A1-B = AC  
Hemline on centre front can be squared or curved.
- D = Shoulder point D-I = 2 cm
- C-I = Join C-I and extend this line to J. C-I = lapel fold line.  
I-J = distance of ½ back neck curve.
- D-E = Draw a dotted line from D parallel to the centre front. (9 cm).
- E-E1 = 1,2-2,5 cm to the left. Join -DE1.
- E1-F = 16,5 cm or as desired for the width of lapel. Square on line E1-D.
- F = Draw straight line from F into the neckline curve.
- GF = 3,5 cm to the left from F (or as desired).
- GH = (GF-3 mm) Draw in at a balanced angle for collar point.
- J = Square to the left and right from J. 
- J-K = 2,5 cm to the right. Join K to D to curve into the neckline.
- J-L = 5 cm to the right. L1 = 6 mm up.
- K-L1 = Join K-L1 = centre back line.

Join L1-H for collar style line. Square on line K-L1.

Join F-C with a curve for lapel style line.

Draw in a facing: 5 cm on shoulder line. The width at hemline equals  $2 \times \text{wrap} + 1,2 \text{ cm}$ .


To separate the collar from the bodice section, cut from G-D-K. 

Draw the princess line, half of the armhole and draw the princess line from the armhole to the bustpoint.

Close the dart.

Measure 15 cm down from the waistline to the hemline for the jacket length

Draw the curve at the centre front hemline

Draw the princess line down to the hemline. 

Add the 5 cm flare on each side of the panel line (join the flare up to the waistline)

Indicate the slash lines

Add the 5 cm flare at the hem of the side seam (extend this line to the waistline)

Ignore the pockets



Final

Trace the top collar and the under collar



Trace the facing

Add seam allowance, grain line and label all the pattern pieces.

**OR**

5.2 Using the following instructions and measurements, manipulate the men's jacket with gents collar in fifth scale. Use the men's jacket block on ADDENDUM B.

MEASUREMENTS



Seam allowance	1 cm
Back neck	9 cm
Button stand	2,5 cm
Button diameter	2,5 cm
Neck size	40 cm

INSTRUCTIONS

Planning

Draw the facing 5 cm

Mark point 1 at the breakpoint, 30 cm from the centre front downwards

2 at neckline of shoulder point, squared down from 2

2-3 =  $\frac{1}{8}$  neck size plus 1 cm

3-4 = 1,5 cm, square across to 5 on centre front line.



Join 3-5, extend revers line from 5

Mark in and extend fitting line of shoulder, mark point 6 at next point

6-7 = 2,5 cm

Draw the breakline from point 1 through to 7, extend this line along fitting line.

7-8 = measurement of the back neck plus 0,5 cm

8-9 = 2 cm to the left, join 7-9

9-10 = 3 cm to the left

9-11 = 4 cm to the right

Draw a line from 10 parallel to the line 7-9 to touch the line 3-5 at 12.

Mark 2 cm from 5 to mark point 13 for collar point

Mark point 14 at collar edge.

Draw the style line of the collar and the revers.

Curve the outer edge of the collar slightly




Mark two buttonholes and buttonstand.

Curve the hemline at the centre front.

Final

Trace the top collar and the under collar.


Add the grain line, seam allowance and label all the pattern pieces.

- |       |  |   |                     |
|-------|--|---|---------------------|
| 5.2.1 | Submit the planning of the front of the jacket.  |  | (30)                |
| 5.2.2 | Submit the final of top collar and under collar. |   | (20)<br><b>[50]</b> |

## QUESTION 6


Manipulate the men's trouser with inseam pocket to fifth scale. Use the men's basic trouser block on ADDENDUM C.

### MEASUREMENTS

Pocket mouth	15 cm	
Pocket depth	25 cm	
Pocket width	15 cm	
Seam allowance	1,5 cm	
Facing	5 cm	
Facing edge	0,5 cm	

### INSTRUCTIONS

Planning of the front

- A = Side seam waistline
- A–B = 5 cm downwards on the side seam
- B–C = 15 cm downwards on the side seam for the pocket mouth  
Mark pocket mouth position
- C–D = 5 cm downwards at the side seam 
- A–E = 15 cm at the waistline measure to the left and square down
- F = 25 cm from E  
Connect E, F and D for the pocket bag  
Curve the pocket back at F

Mark the pocket facing 5 cm

Final 


Trace the front trouser, facing and pocket bag  
Label all the pattern pieces, add grain line and seam allowance.

- |     |  |                     |
|-----|--|---------------------|
| 6.1 | Submit the planning of the front.                                    | (10)                |
| 6.2 | Submit the final of the front trouser, pocket bag and pocket facing. | (15)<br><b>[25]</b> |

**QUESTION 7**

Adapt the basic petticoat block. Use the ONE piece dress block, back and front on ADDENDUM D in fifth scale. Make use of the following instructions and measurements to adapt the pattern.

**INSTRUCTIONS****Front**


- A = Mark A at the centre front scye line.
- B = Mark B at the underarm scye line side seam.
- C = 1,2 cm from B 
- D–E = Placed at the bust control dart lines across the chest line
- F and G = 2,5 cm from D and E, measure down from the dart line and 1,2 cm out from the dart


Connect A to F and curve from G to C  
 Curve from G to the bust control dart point  
 Ignore the waist suppression dart

- H = 1,5 cm from the side seam waistline  
 Connect H to C and curve from H down to the hip depth line

Mark the grain line, label the pattern

**Back**

- I = Centre back scye line 
- J = 3 cm from I downwards
- K = Underarm scye line
- K–L = 2 cm to the left

Connect J to L with a curve 

- M = 1,5 cm I from the side seam waistline

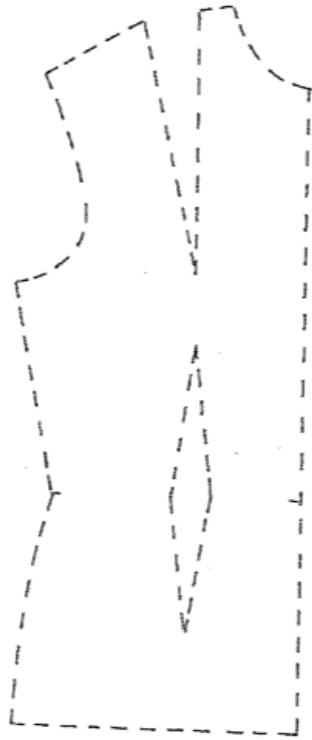
Connect L to M with a curve down to the hip depth line  
 Mark the grain line, label the pattern

Submit the adaptation of the petticoat back and the front.

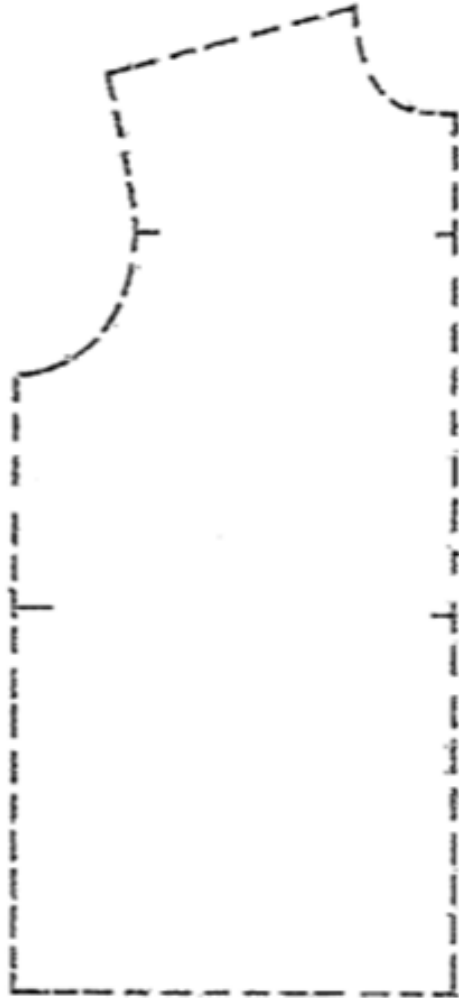
**[50]**

**TOTAL SECTION B: 150**  
**GRAND TOTAL: 200**

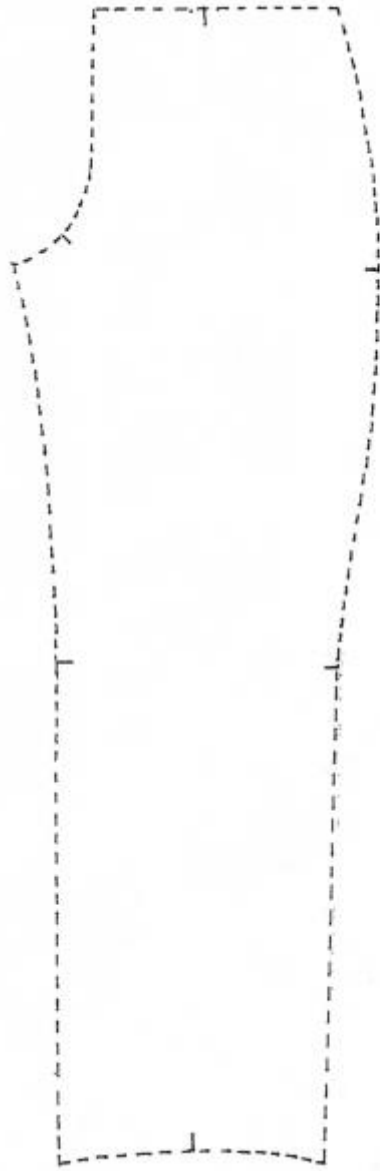
**ADDENDUM A**



**ADDENDUM B**



**ADDENDUM C**



**ADDENDUM D**

