

Mathematical Literacy 3

Class Test 1

Name: _____

Date: _____

1. Arrange the following numbers from largest to smallest:

a. 0.454; 0.73; 0.117; 0.265; 0.138 (2)

.....

b. $\frac{5}{16}$, $\frac{3}{7}$, $\frac{4}{6}$, $\frac{5}{8}$, $\frac{3}{6}$ (2)

.....

[4]

2. Convert the following to percentages:

a. $\frac{18}{32}$ (2)

.....

b. 0.864 (2)

.....

[4]

3. Number lines:

a. Draw a number line between 2 and 3 showing tenths between the two numbers. (2)

b. Draw a number line between 5.4 and 5.5 showing 100s between the numbers. (2)

[4]

4. Put the following in 24 hour notation and sketch the analogue face:

a. 3:56 AM (2)

b. 5:45 PM (2)

[4]

5. Convert the following to fractions:

a. 0.625 (2)

b. 0.750 (2)

[4]

[20]

Mathematical Literacy 3

Class Test 2

Name: _____

Date: _____

1. Calculate the share of R100 that 3 people will get if they divide it into the ratio 3:5:2

.....
.....

[3]

2. If a cyclist can cycle 120km in 3 hours at what rate is he cycling? How long will it take him to cycle 200km?

.....

[4]

3. Convert the following:

- a. 24 inches into cm (2)

.....

- b. 15 ounces into grams (2)

.....

- c. 9km into miles (2)

.....

1 inch = 2.544cm; 1 ounce = 28.35g; 1 mile = 1.60km

[6]

4. If the scale of a map is 1:10 000, what distance does 1cm on the map represent? Make sure your answer is in an appropriate unit.

.....
.....

[4]

5. If John and Shireen divide R60 between them such that Shireen gets $\frac{6}{10}$ of the total amount, how much does John get?

.....
.....

[3]

6. How many seconds are there in one hour?

.....

[2]

[20]

Mathematical Literacy 3

Class Test 3

Name: _____

Date: _____

1. Describe each of the following accounts:

a. Current Account (2)

.....

b. Savings Account (2)

.....

[4]

2. If a bank charges R2.50 + R1.00 per R100 withdrawn, what will be the charge if you withdraw R600?

.....
.....

[3]

3. If you have R1250 invested in a bank account earning 7% per year, how much will you have at the end of the year?

.....

[4]

4. Name three categories of source documents.

.....
.....

[4]

5. What does it mean when you "cross a cheque?"

.....
.....

[2]

6. When will you get a receipt?

.....

[2]

7. If VAT is charged at 14%, calculate the VAT on a product that costs R1 500 (excluding VAT).

.....
.....

[2]

8. What is typically more expensive – to withdraw money from an ATM or from a teller?

.....

[2]

[20]

Mathematical Literacy 3

Class Test 4

Name: _____

Date: _____

1. Give three tips on saving.

.....
.....
.....

[6]

2. Calculate the simple interest charged on R350 at 10% per annum over 5 years.

.....
.....

[3]

3. Explain the purpose of income statements and balance sheets

.....
.....

[6]

4. As with the example in (2) above, calculate the compound interest

.....

[3]

5. What is profit? (2)

.....

[20]

Mathematical Literacy 3

Class Test 5

Name: _____

Date: _____

1. Find the formula of the following:

a.

x	1	2	3	4
Y	5	7	9	11

Formula:

b.

x	4	8	12	16
Y	1	2	3	4

Formula:

[6]

2. Write the number that you think should logically follow on the numbers in the following sets:

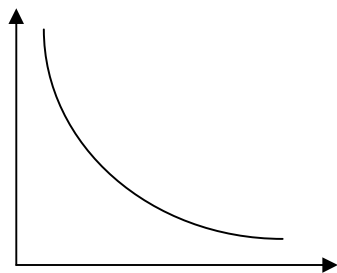
a. 1 1.1 1.21 (2)

b. 625 125 5 (2)

[4]

3. State whether the following are direct or inverse relationships:

a.



.....

b. Speed travelled and time taken to get to destination (2)

.....

[4]

4. Sketch the graph of $y = 2x + 3$

[6]

[20]

Name: _____

Date: _____

1. Represent the following as equations:

a. Multiply the number by 5 and add 3 (2)

.....

b. Input value \rightarrow $\times 7 \rightarrow -4 \rightarrow$ Output value (2)

.....

[4]

2. Name three ways of collecting data

.....
.....
.....

[3]

3. Why do we use samples? Give one example of a sample.

.....
.....
.....

[3]

4. Name three forms of graph and what they are used for.

.....
.....

.....
.....

[6]

5. What is the difference between discrete data and continuous data?

.....
.....

[4]

[20]

Mathematical Literacy 3

Class Test 7

Name: _____

Date: _____

1. Given the following data:

60	60	53	65	86	67	71
35	64	20	93	56	43	71

a. Order the data from smallest to largest (2)

.....
.....

b. Calculate the mean of the data (4)

.....
.....
.....

c. Calculate the median of the data (4)

.....
.....
.....

d. Calculate the mode of the data (2)

.....

[4]

e. Calculate the range and interquartile range

.....
.....

.....

.....

.....

.....

.....

.....

[8]

[20]

Mathematical Literacy 3

Class Test 8

Name: _____

Date: _____

1. Given the following data:

Years of formal income	12	10	15	12	16	15	12	16	14	14
Income (R000s)	4	5	8	10	9	7	5	10	7	6

a. Compile a scattergram for the data (6)

b. Add a line that best fits the graph (2)

c. Comment on the scattergram. Do you think that it is a close fit? Do you notice a trend?

If so, what? (4)

.....
.....
.....

[12]

2. Give four features of a bar graph

.....
.....
.....
.....

[4]

3. Given the data work out the angle that each would occupy on a pie chart. Do not draw it.

Popularity of non-fiction vs. fiction books.

Fiction: 57 Non-fiction: 43

.....
.....
.....
.....

[4]

[20]